

ELEVENTH EDITION

CAMPBELL
BIOLOGY

URRY • CAIN • WASSERMAN
MINORSKY • REECE



Brief Contents

- 1 Evolution, the Themes of Biology, and Scientific Inquiry 2

UNIT 1 THE CHEMISTRY OF LIFE 27

- 2 The Chemical Context of Life 28
- 3 Water and Life 44
- 4 Carbon and the Molecular Diversity of Life 56
- 5 The Structure and Function of Large Biological Molecules 66

UNIT 2 THE CELL 92

- 6 A Tour of the Cell 93
- 7 Membrane Structure and Function 126
- 8 An Introduction to Metabolism 143
- 9 Cellular Respiration and Fermentation 164
- 10 Photosynthesis 187
- 11 Cell Communication 212
- 12 The Cell Cycle 234

UNIT 3 GENETICS 253

- 13 Meiosis and Sexual Life Cycles 254
- 14 Mendel and the Gene Idea 269
- 15 The Chromosomal Basis of Inheritance 294
- 16 The Molecular Basis of Inheritance 314
- 17 Gene Expression: From Gene to Protein 335
- 18 Regulation of Gene Expression 363
- 19 Viruses 396
- 20 DNA Tools and Biotechnology 413
- 21 Genomes and Their Evolution 440

UNIT 4 MECHANISMS OF EVOLUTION 465

- 22 Descent with Modification: A Darwinian View of Life 466
- 23 The Evolution of Populations 484
- 24 The Origin of Species 504
- 25 The History of Life on Earth 523

UNIT 5 THE EVOLUTIONARY HISTORY OF BIOLOGICAL DIVERSITY 550

- 26 Phylogeny and the Tree of Life 551
- 27 Bacteria and Archaea 571

- 28 Protists 591
- 29 Plant Diversity I: How Plants Colonized Land 616
- 30 Plant Diversity II: The Evolution of Seed Plants 634
- 31 Fungi 652
- 32 An Overview of Animal Diversity 671
- 33 An Introduction to Invertebrates 684
- 34 The Origin and Evolution of Vertebrates 716

UNIT 6 PLANT FORM AND FUNCTION 755

- 35 Vascular Plant Structure, Growth, and Development 756
- 36 Resource Acquisition and Transport in Vascular Plants 782
- 37 Soil and Plant Nutrition 803
- 38 Angiosperm Reproduction and Biotechnology 820
- 39 Plant Responses to Internal and External Signals 840

UNIT 7 ANIMAL FORM AND FUNCTION 870

- 40 Basic Principles of Animal Form and Function 871
- 41 Animal Nutrition 896
- 42 Circulation and Gas Exchange 919
- 43 The Immune System 950
- 44 Osmoregulation and Excretion 975
- 45 Hormones and the Endocrine System 997
- 46 Animal Reproduction 1017
- 47 Animal Development 1041
- 48 Neurons, Synapses, and Signaling 1065
- 49 Nervous Systems 1083
- 50 Sensory and Motor Mechanisms 1105
- 51 Animal Behavior 1137

UNIT 8 ECOLOGY 1161

- 52 An Introduction to Ecology and the Biosphere 1162
- 53 Population Ecology 1188
- 54 Community Ecology 1212
- 55 Ecosystems and Restoration Ecology 1236
- 56 Conservation Biology and Global Change 1258

CAMPBELL BIOLOGY

ELEVENTH EDITION



Lisa A. Urry

MILLS COLLEGE, OAKLAND,
CALIFORNIA

Michael L. Cain

BOWDOIN COLLEGE, BRUNSWICK,
MAINE

Steven A. Wasserman

UNIVERSITY OF CALIFORNIA,
SAN DIEGO

Peter V. Minorsky

MERCY COLLEGE, DOBBS FERRY,
NEW YORK

Jane B. Reece

BERKELEY, CALIFORNIA



Pearson

330 Hudson Street, New York, NY 10013

Courseware Portfolio Management Director: *Beth Wilbur*
Courseware Portfolio Management Specialist: *Josh Frost*
Courseware Director, Content Development:
Ginnie Simone Jutson
Supervising Editors: *Beth N. Winickoff, Pat Burner*
Courseware Senior Analysts: *John Burner,*
Mary Ann Murray, Hilair Chism
Courseware Specialist: *Laura Southworth*
Development Editor: *Mary Hill*
Director, Content Production
and Digital Studio: *Erin Gregg*
Managing Producer, Science: *Michael Early*
Content Producer, Science: *Lori Newman*
Production Management and Composition:
Integra Software Services, Inc.
Illustrations: *Lachina*
Design Manager: *Marilyn Perry*
Cover and Text Design: *Elise Lansdon*
Rights & Permissions Manager: *Ben Ferrini*
Photo Researcher: *Maureen Spuhler*

Art/Text/Photo Permissions Specialist:
Integra Software Services, Inc.
Senior Content Developer, MasteringBiology™:
Sarah Jensen
Senior Rich Media Content Producer:
Lee Ann Doctor
Rich Media Content Producer: *Tod Regan*
Content Producers: *Jackie Jakob, Ziki Dekel*
Associate Content Producer: *Libby Reiser*
Associate Instructional Designer: *Cady Owens*
Associate Mastering™ Media Producer: *Charles Hall*
Project Manager: *Katie Cook*
VP Product Marketing: *Christy Lesko*
Executive Product Marketing Manager: *Lauren Harp*
Field Marketing Manager: *Kelly Galli*
Manufacturing Buyer: *Stacey Weinberger*
Text & Cover Printer: *Courier/Kendallville*
Cover Photo: *Helianthus annuus* (cultivated sunflower)
Cover Photo Credit: © Radius Images/Getty Images

Copyright © 2017, 2014, 2011 Pearson Education, Inc. All Rights Reserved. Printed in the United States of America. This publication is protected by copyright, and permission should be obtained from the publisher prior to any prohibited reproduction, storage in a retrieval system, or transmission in any form or by any means, electronic, mechanical, photocopying, recording, or otherwise. For information regarding permissions, request forms and the appropriate contacts within the Pearson Education Global Rights & Permissions department, please visit www.pearsoned.com/permissions/.

Readers may view, browse, and/or download material for temporary copying purposes only, provided these uses are for noncommercial personal purposes. Except as provided by law, this material may not be further reproduced, distributed, transmitted, modified, adapted, performed, displayed, published, or sold in whole or in part, without prior written permission from the publisher.

Acknowledgments of third-party content appear on page CR-1, which constitutes an extension of this copyright page.

PEARSON, ALWAYS LEARNING, MasteringBiology™ and BioFlix® are exclusive trademarks owned by Pearson Education, Inc. or its affiliates in the U.S. and/or other countries.

Unless otherwise indicated herein, any third-party trademarks that may appear in this work are the property of their respective owners, and any references to third-party trademarks, logos, or other trade dress are for demonstrative or descriptive purposes only. Such references are not intended to imply any sponsorship, endorsement, authorization, or promotion of Pearson's products by the owners of such marks, or any relationship between the owner and Pearson Education, Inc. or its affiliates, authors, licensees, or distributors.

Library of Congress Cataloging-in-Publication Data

Names: Reece, Jane B., author. | Urry, Lisa A., author. | Campbell, Neil A., 1946-2004, author.

Title: Campbell biology / Lisa Urry, Michael Cain, Steven Wasserman, Peter Minorsky, Jane Reece.

Description: Eleventh edition. | Hoboken: Pearson Higher Education, 2016. |

Previous edition: Campbell biology / Jane B. Reece, Lisa A. Urry, Michael L. Cain, Steven A. Wasserman, Peter V. Minorsky, Robert B. Jackson.

Tenth edition. 2014. | 1st edition: Biology by Neil A. Campbell, 1987.

Identifiers: LCCN 2016025573

Subjects: LCSH: Biology.

Classification: LCC QH308.2 .C34 2016 | DDC 570—dc23

LC record available at <https://lcn.loc.gov/2016025573>

About the Authors



Lisa A. Urry is Professor of Biology and Chair of the Biology Department at Mills College. After earning a B.A. at Tufts University, she completed her Ph.D. at the Massachusetts Institute of Technology (MIT). Lisa has conducted research on gene expression during embryonic and larval development in sea urchins. Deeply committed to promoting opportunities in science for women and underrepresented minorities, she has taught courses ranging from introductory and developmental biology to a nonmajors course called Evolution for Future Presidents. Lisa is a coauthor of *Campbell Biology in Focus*.



Michael L. Cain is an ecologist and evolutionary biologist who is now writing full-time. Michael earned an A.B. from Bowdoin College, an M.Sc. from Brown University, and a Ph.D. from Cornell University. As a faculty member at New Mexico State University, he taught introductory biology, ecology, evolution, botany, and conservation biology. Michael is the author of dozens of scientific papers on topics that include foraging behavior in insects and plants, long-distance seed dispersal, and speciation in crickets. He is a coauthor of *Campbell Biology in Focus* and of an ecology textbook.



Steven A. Wasserman is Professor of Biology at the University of California, San Diego (UCSD). He earned an A.B. from Harvard University and a Ph.D. from MIT. Working on the fruit fly *Drosophila*, Steve has done research on developmental biology, reproduction, and immunity. Having taught genetics, development, and physiology to undergraduate, graduate, and medical students, he now focuses on introductory biology, for which he has been honored with UCSD's Distinguished Teaching Award. He is a coauthor of *Campbell Biology in Focus*.



Peter V. Minorsky is Professor of Biology at Mercy College in New York, where he teaches introductory biology, ecology, and botany. He received his A.B. from Vassar College and his Ph.D. from Cornell University. Peter taught at Kenyon College, Union College, Western Connecticut State University, and Vassar College; he is also the science writer for the journal *Plant Physiology*. His research interests concern how plants sense environmental change. Peter received the 2008 Award for Teaching Excellence at Mercy College and is a coauthor of *Campbell Biology in Focus*.



Jane B. Reece, the head of the author team for Editions 8–10 of *CAMPBELL BIOLOGY*, was Neil Campbell's longtime collaborator. Jane taught biology at Middlesex County College and Queensborough Community College. She holds an A.B. from Harvard University, an M.S. from Rutgers University, and a Ph.D. from the University of California, Berkeley. Jane's research as a doctoral student at UC Berkeley and postdoctoral fellow at Stanford University focused on genetic recombination in bacteria. Besides her work on *CAMPBELL BIOLOGY*, Jane has been a coauthor on all the *Campbell* texts.



Neil A. Campbell (1946–2004) earned his M.A. from the University of California, Los Angeles, and his Ph.D. from the University of California, Riverside. His research focused on desert and coastal plants. Neil's 30 years of teaching included introductory biology courses at Cornell University, Pomona College, and San Bernardino Valley College, where he received the college's first Outstanding Professor Award in 1986. For many years he was also a visiting scholar at UC Riverside. Neil was the founding author of *CAMPBELL BIOLOGY*.

Preface

We are honored to present the Eleventh Edition of *CAMPBELL BIOLOGY*. For the last three decades, *CAMPBELL BIOLOGY* has been the leading college text in the biological sciences. It has been translated into 19 languages and has provided millions of students with a solid foundation in college-level biology. This success is a testament not only to Neil Campbell's original vision but also to the dedication of hundreds of reviewers (listed on pages xxviii–xxx), who, together with editors, artists, and contributors, have shaped and inspired this work.



Our goals for the Eleventh Edition include:

- **increasing visual literacy** through new figures, questions, and exercises that build students' skills in understanding and creating visual representations of biological structures and processes
- asking students to **practice scientific skills** by applying scientific skills to real-world problems
- **supporting instructors** by providing teaching modules with tools and materials for introducing, teaching, and assessing important and often challenging topics
- **integrating text and media** to engage, guide, and inform students in an active process of inquiry and learning

Our starting point, as always, is our commitment to crafting text and visuals that are accurate, are current, and reflect our passion for teaching biology.

New to This Edition

Here we provide an overview of the new features that we have developed for the Eleventh Edition; we invite you to explore pages ix–xxvi for more information and examples.

- **Visualizing Figures** and **Visual Skills Questions** give students practice in interpreting and creating visual representations in biology. The Visualizing Figures have embedded questions that guide students in exploring how diagrams, photographs, and models represent and reflect biological systems and processes. Assignable questions are also available in **MasteringBiology** to give students practice with the visual skills addressed in the figures.
- **Problem-Solving Exercises** challenge students to apply scientific skills and interpret data in solving real-world problems. These exercises are designed to engage students through compelling case studies and provide practice with data analysis skills. Problem-Solving Exercises have assignable versions in **MasteringBiology**. Some also have

more extensive “Solve It” investigations to further explore a given topic.

- **Ready-to-Go Teaching Modules** on key topics provide instructors with assignments to use before and after class, as well as in-class activities that use clickers or Learning Catalytics™ for assessment.
- **Integrated text and media:** Media references in the printed book direct students to the wealth of online self-study resources available to them in the **Study Area** section of **MasteringBiology**. In eText 2.0

(which will be available for Fall 2017 classes), these resources will also be integrated directly into the eText. The new online learning tools include:

- **Get Ready for This Chapter** questions provide a quick check of student understanding of the background information needed to learn a new chapter's content, with feedback to bolster their preparation.
- **Figure Walkthroughs** guide students through key figures with narrated explanations, figure markups, and questions that reinforce important points. Additional questions can be assigned in **MasteringBiology**.
- More than **450 animations and videos** bring biology to life. These include resources from **HHMI BioInteractive** that engage students in topics from the discovery of the double helix to evolution.
- QR codes and URLs within the Chapter Review provide easy access to **Vocabulary Self-Quizzes** and **Practice Tests** for each chapter that can be used on smartphones, tablets, and computers.
- **Interviews** from the First Edition through the Eleventh Edition of *CAMPBELL BIOLOGY* are referenced in the chapter where they are most relevant. The interviews show students the human side of science by featuring diverse scientists talking about how they became interested in what they study, how they began, and what inspires them.
- The impact of **climate change** at all levels of the biological hierarchy is explored throughout the text, starting with a new figure (Figure 1.12) and discussion in Chapter 1 and concluding with a new Make Connections Figure (Figure 56.30) and expanded coverage on causes and effects of climate change in Chapter 56.
- As in each new edition of *CAMPBELL BIOLOGY*, the Eleventh Edition incorporates **new content** and **pedagogical improvements**. These are summarized on pp. vi–viii, following this Preface. Content updates reflect rapid, ongoing changes in technology and knowledge in the fields of genomics, gene editing technology (CRISPR), evolutionary

biology, microbiology, and more. In addition, significant revisions to Unit 8, Ecology, improve the conceptual framework for core ecological topics (such as population growth, species interactions, and community dynamics) and more deeply integrate evolutionary principles.

Our Hallmark Features

Teachers of general biology face a daunting challenge: to help students acquire a conceptual framework for organizing an ever-expanding amount of information. The hallmark features of *CAMPBELL BIOLOGY* provide such a framework, while promoting a deeper understanding of biology and the process of science. As such, they are well aligned with the core competencies outlined by the 2009 **Vision and Change** national conference. Furthermore, the core concepts defined by Vision and Change have close parallels in the unifying themes that are introduced in Chapter 1 and integrated throughout the book. Chief among the themes of both Vision and Change and *CAMPBELL BIOLOGY* is **evolution**. Each chapter of this text includes at least one Evolution section that explicitly focuses on evolutionary aspects of the chapter material, and each chapter ends with an Evolution Connection Question and a Write About a Theme Question.

To help students distinguish the “forest from the trees,” each chapter is organized around a framework of three to seven carefully chosen **Key Concepts**. The text, Concept Check Questions, Summary of Key Concepts, and MasteringBiology resources all reinforce these main ideas and essential facts.

Because text and illustrations are equally important for learning biology, **integration of text and figures** has been a hallmark of this text since the First Edition. In addition to the new Visualizing Figures, our popular Exploring Figures and Make Connections Figures epitomize this approach. Each Exploring Figure is a learning unit of core content that brings together related illustrations and text. Make Connections Figures reinforce fundamental conceptual connections throughout biology, helping students overcome tendencies to compartmentalize information. The Eleventh Edition features two new Make Connections Figures. There are also Guided Tour Figures that walk students through complex figures as an instructor would.

To encourage **active reading** of the text, *CAMPBELL BIOLOGY* includes numerous opportunities for students to stop and think about what they are reading, often by putting pencil to paper to draw a sketch, annotate a figure, or graph data. Active reading questions include Visual Skills Questions, Draw It Questions, Make Connections Questions, What If? Questions, Figure Legend Questions, Summary Questions, Synthesize Your Knowledge Questions, and Interpret the Data Questions. Answering these questions requires students to write or draw as well as think and thus helps develop the core competency of communicating science.

Finally, *CAMPBELL BIOLOGY* has always featured **scientific inquiry**, an essential component of any biology course. Complementing stories of scientific discovery in the text narrative

and the unit-opening interviews, our standard-setting Inquiry Figures deepen the ability of students to understand how we know what we know. Scientific Inquiry Questions give students opportunities to practice scientific thinking, along with the Problem-Solving Exercises, Scientific Skills Exercises, and Interpret the Data Questions. Together, these activities provide students practice in both applying the process of science and using quantitative reasoning, addressing additional core competencies outlined in Vision and Change.

MasteringBiology®

MasteringBiology, the most widely used online assessment and tutorial program for biology, provides an extensive library of homework assignments that are graded automatically. In addition to the **new Get Ready for This Chapter Questions, Figure Walkthroughs, Problem-Solving Exercises, and Visualizing Figures**, MasteringBiology offers Dynamic Study Modules, Adaptive Follow-Up Assignments, Scientific Skills Exercises, Interpret the Data Questions, Solve It Tutorials, HHMI Bio-Interactive Short Films, BioFlix® Tutorials with 3-D Animations, Experimental Inquiry Tutorials, Interpreting Data Tutorials, BLAST Tutorials, Make Connections Tutorials, Video Field Trips, Video Tutor Sessions, Get Ready for Biology, Activities, Reading Quiz Questions, Student Misconception Questions, 4,500 Test Bank Questions, and MasteringBiology Virtual Labs. MasteringBiology also includes the *CAMPBELL BIOLOGY* eText, Study Area, Instructor Resources, and Ready-to-Go Teaching Modules. See pages ix–xxiii and www.masteringbiology.com for more details.

Our Partnership with Instructors and Students

A core value underlying our work is our belief in the importance of a partnership with instructors and students. One primary way of serving instructors and students, of course, is providing a text that teaches biology well. In addition, Pearson offers a rich variety of instructor and student resources, in both print and electronic form (see pp. ix–xxiii). In our continuing efforts to improve the book and its supplements, we benefit tremendously from instructor and student feedback, not only in formal reviews from hundreds of scientists, but also via e-mail and other avenues of informal communication.

The real test of any textbook is how well it helps instructors teach and students learn. We welcome comments from both students and instructors. Please address your suggestions to:

Lisa Urry (Chapter 1 and Units 1–3)

lurry@mills.edu

Michael Cain (Units 4, 5, and 8)

mcain@bowdoin.edu

Peter Minorsky (Unit 6)

pminorsky@mercy.edu

Steven Wasserman (Unit 7)

stevenw@ucsd.edu

Highlights of New Content

This section highlights selected new content and pedagogical changes in *CAMPBELL BIOLOGY*, Eleventh Edition.

CHAPTER 1 Evolution, the Themes of Biology, and Scientific Inquiry

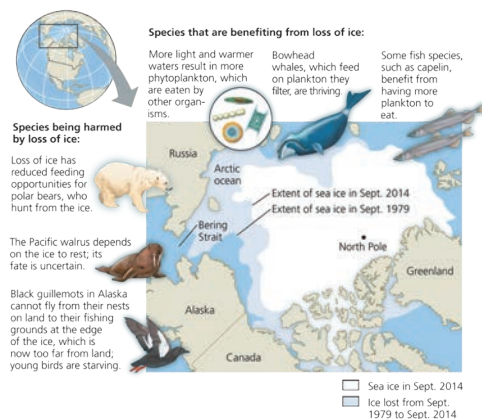
Chapter 1 opens with a new introduction to a case study on the evolution of coloration in mice. New text and a new photo (Figure 1.12) relate climate change to species survival.

UNIT 1 THE CHEMISTRY OF LIFE

In Unit 1, new content engages students in learning this foundational material. The opening of Chapter 3 and new **Figure 3.7** show organisms affected by **loss of Arctic sea ice**. Chapter 5 has updates on lactose intolerance, *trans* fats, the effects of diet on blood cholesterol, protein sequences and structures, and intrinsically disordered proteins.

New Visualizing Figure 5.16 helps students understand various ways proteins are depicted. A new Problem-Solving Exercise engages students by having them compare DNA sequences in a case of possible fish fraud.

Figure 3.7 Effects of climate change on the Arctic.



UNIT 2 THE CELL

Our main goal for this unit was to make the material more accessible and inviting to students. New Visualizing Figure 6.32 shows the profusion of molecules and structures in a cell, all drawn to scale. In Chapter 7, a new figure illustrates levels of LDL receptors in people with and without familial hypercholesterolemia. Chapter 8 includes a beautiful new photo of a geyser with thermophilic bacteria in Figure 8.17, bringing to life the graphs of optimal temperatures for enzyme function. Chapter 10 discusses current research trying to genetically modify rice (a C_3 crop) so that it is capable of carrying out C_4 photosynthesis to increase yields. Chapter 11 includes a new Problem-Solving Exercise that guides students through assessing possible new treatments for bacterial infections by blocking quorum sensing. In Chapter 12, the mechanism of chromosome movement in bacteria has been updated and more cell cycle control checkpoints have been added, including one proposed by researchers in 2014.

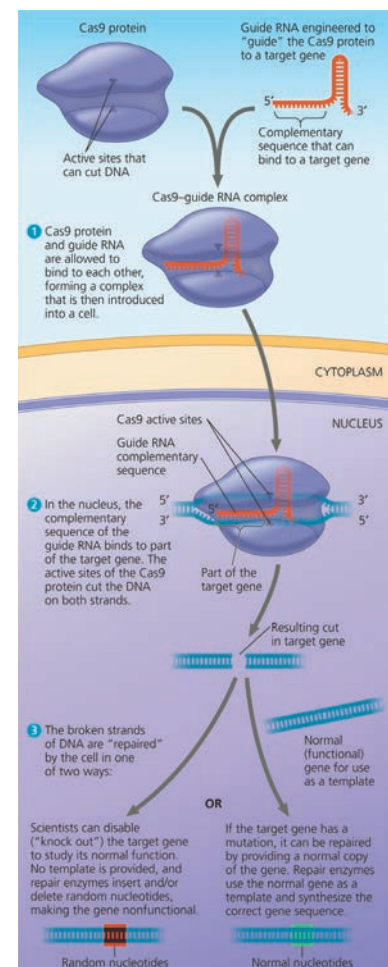
UNIT 3 GENETICS

In Chapters 13–17, we have incorporated changes that help students grasp the more abstract concepts of genetics and their chromosomal and molecular underpinnings. For example, a new Visual Skills Question with Figure 13.6 asks students to identify

where in the three life cycles haploid cells undergo mitosis, and what type of cells are formed. Chapter 14 includes new information from a 2014 genomic study on the number of genes and genetic variants contributing to height. Figure 14.15b now uses “inability to taste PTC” rather than “attached earlobe.” Chapters 14 and 15 are more inclusive, clarifying the meaning of the term “normal” in genetics and explaining that sex is no longer thought to be simply binary. Other updates in Chapter 15 include new research in sex determination and a technique being developed to avoid passing on mitochondrial diseases. New Visualizing Figure 16.7 shows students various ways that DNA is illustrated. Chapter 17 has a new opening photo and story about albino donkeys to pique student interest in gene expression. To help students understand the Beadle and Tatum experiment, new Figure 17.2 explains how they obtained nutritional mutants. A new Problem-Solving Exercise asks students to identify mutations in the insulin gene and predict their effect on the protein.

Chapters 18–21 are extensively updated, driven by exciting new discoveries based on DNA sequencing and gene-editing technology. Chapter 18 has updates on histone modifications, nuclear location and the persistence of transcription factories, chromatin remodeling by ncRNAs, long noncoding RNAs (lncRNAs), the role of master regulatory genes in modifying chromatin structure, and the possible role of *p53* in the low incidence of cancer in elephants. Make Connections Figure 18.27, “Genomics, Cell Signaling, and Cancer,” has been expanded to include more information on cell signaling. Chapter 19 features a new section that covers bacterial defenses against bacteriophages and describes the CRISPR-Cas9 system (Figure 19.7); updates include the Ebola, Chikungunya, and Zika viruses (Figure 19.10) and discovery of the largest virus known to date. A discussion has been added of mosquito transmission of diseases and concerns about the effects of global climate change on disease transmission. Chapter 20 has a new photo of next-generation DNA sequencing machines (Figure 20.2) and a new illustration of the widely used technique of RNA sequencing (Figure 20.13). A new section titled Editing Genes and Genomes has been added describing the

Figure 20.14 Gene editing using the CRISPR-Cas9 system.



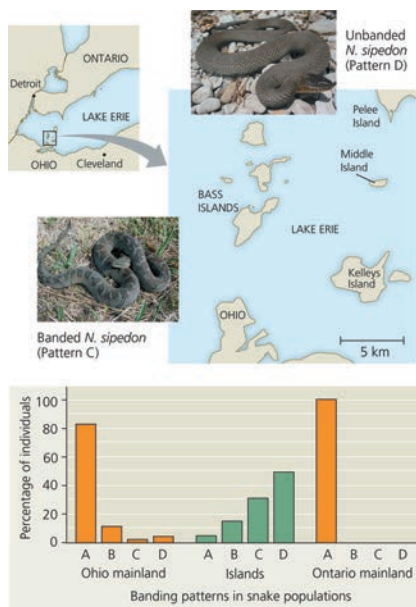
CRISPR-Cas9 system (Figure 20.14) that has been developed to edit genes in living cells. Information has also been

added later in the chapter on use of the CRISPR-Cas9 system, including a study in which a genetic mutation for the disease tyrosinemia was corrected in mice. Finally, the discussion of ethical considerations has been updated to include a recent report of scientists using the CRISPR-Cas9 system to edit a gene in human embryos, along with a discussion of the ethical questions raised by such experiments, such as its usage in the gene drive approach to combat carrying of diseases by mosquitoes. In Chapter 21, in addition to the usual updates of sequence-related data (speed of sequencing, number of species' genomes sequenced, etc.), there are several research updates, including some early results from the new Roadmap Epigenomics Project and results from a 2015 study focusing on 414 important yeast genes.

UNIT 4 MECHANISMS OF EVOLUTION

A major goal for this revision was to strengthen how we help students understand and interpret visual representations of evolutionary data and concepts. Toward this end, we have added a new figure (Figure 25.8), “Visualizing the Scale of Geologic Time,” and a new figure (Figure 23.12) on **gene flow**. Several figures have been revised to improve the presentation of data, including Figure 24.6 (on reproductive isolation in mosquitofish), Figure 24.10 (on allopolyploid speciation), and Figure 25.25 (on the origin of the insect body plan). The unit also features new material that connects evolutionary concepts and societal problems. Examples include text in Chapter 22 on the 2015 discovery of teixobactin, an antibiotic that is effective against some hard-to-treat pathogens, a new discussion in Chapter 24 on the impact of climate change on hybrid zones, and a new Problem-Solving Exercise in Chapter 24 on how hybridization may have led to the spread of insecticide resistance genes in mosquitoes that transmit malaria. The unit also includes new chapter-opening stories in Chapter 22 (on a moth whose features illustrate the concepts of unity, diversity, and adaptation) and Chapter 25 (on the discovery of whale bones in the Sahara Desert). Additional changes include new text in Concept 22.3 emphasizing how populations can evolve over short periods of time, a new table (Table 23.1) highlighting the five conditions required for a population to be in Hardy-Weinberg equilibrium, and new material in Concept 25.1 describing how researchers recently succeeded for the first time in constructing a “protocell” in which replication of a template strand of RNA could occur.

▼ **Figure 23.12 Gene flow and local adaptation in the Lake Erie water snake (*Nerodia sipedon*).**



UNIT 5 THE EVOLUTIONARY HISTORY OF BIOLOGICAL DIVERSITY

In keeping with our goal of improving how students interpret and create visual representations in biology, we have added a new figure (Figure 26.5, “Visualizing Phylogenetic Relationships”) that introduces the visual conventions used in phylogenetic trees and helps students understand what such trees do and don’t convey. Students are also provided many opportunities to practice their visual skills, with more than ten new Visual Skills Questions on topics ranging from interpreting phylogenetic trees to predicting which regions of a bacterial flagellum are hydrophobic. The unit also contains new content on tree thinking, emphasizing such key points as how sister groups provide a clear way to describe evolutionary relationships and how trees do not show a “direction” in evolution. Other major content changes include new text in Concepts 26.6, 27.4, and 28.1 on the 2015 discovery of the Lokiarchaeota, a group of archaea that may represent the sister group of the eukaryotes, new text and a new figure (Figure 26.22) on horizontal gene transfer from prokaryotes to eukaryotes, new text in Concept 27.6 describing the CRISPR-Cas9 system and a new figure (Figure 27.21) that illustrates one example of how CRISPR-Cas 9 technology has opened new avenues of research on HIV, and new material in Concept 29.3 describing how early forests contributed to global climate change (in this case, global cooling). A new Problem-Solving Exercise in Chapter 34 engages students in interpreting data from a study investigating whether frogs can acquire resistance to a fungal pathogen through controlled exposure to it. Other updates include the revision of many phylogenies to reflect recent phylogenomic data, new chapter-opening stories in Chapter 31 (on how mycorrhizae link trees of different species) and Chapter 33 (on the “blue dragon,” a mollusc that preys on the highly toxic Portuguese man-of-war), new text and a new figure (Figure 34.37) on the adaptations of the kangaroo rat to its arid environment, and new material in Concept 34.7, including a new figure (Figure 34.52) describing fossil and DNA evidence indicating that humans and Neanderthals interbred, producing viable offspring. The discussion of **human evolution** also includes new text and a new figure (Figure 34.53) on *Homo naledi*, the most recently discovered member of the human evolutionary lineage.

▼ **Figure 34.53 Fossils of hand and foot bones of *Homo naledi*.**



UNIT 6 PLANT FORM AND FUNCTION

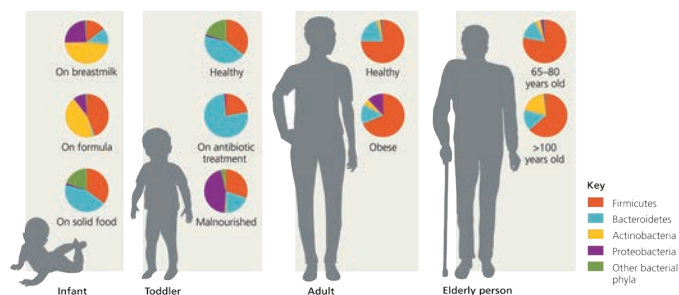
A major aim in revising Chapter 35 was to help students better understand how primary and secondary growth are related. New Visualizing Figure 35.11 enables students to picture growth at the cellular level. Also, the terms *protoderm*, *procambium*, and *ground meristem* have been introduced to underscore the transition of meristematic to mature tissues. A new flowchart (Figure 35.24) summarizes growth in a woody shoot. New text and a figure (Figure 35.26) focus on genome analysis of *Arabidopsis* ecotypes, relating plant morphology to ecology and evolution. In Chapter 36, new Figure 36.8 illustrates the fine branching of leaf veins, and information on

phloem-xylem water transfer has been updated. New Make Connections Figure 37.10 highlights mutualism across kingdoms and domains. Figure 37.13 and the related text include new findings on how some soil nitrogen derives from weathering of rocks. New Figure 38.3 clarifies how the terms *carpel* and *pistil* are related. The text on flower structure and the angiosperm life cycle figure identify carpels as megasporophylls and stamens as microsporophylls, correlating with the plant evolution discussion in Unit 5. In Concept 38.3, the current problem of glyphosate-resistant crops is discussed in detail. A revised Figure 39.7 helps students visualize how cells elongate. Figure 39.8 now addresses apical dominance in a Guided Tour format. Information about the role of sugars in controlling apical dominance has been added. In Concept 39.4, a new Problem-Solving Exercise highlights how global climate change affects crop productivity. Figure 39.26 on defense responses against pathogens has been simplified and improved.

UNIT 7 ANIMAL FORM AND FUNCTION

A major goal of the Unit 7 revision was to transform how students interact with and learn from representations of anatomy and physiology. For example, gastrulation is now introduced with a Visualizing Figure (Figure 47.8) that provides a clear and carefully paced introduction to three-dimensional processes that may be difficult for students to grasp. In addition, a number of the new and revised figures help students explore spatial relationships in anatomical contexts, such as the interplay of lymphatic and cardiovascular circulation (Figure 42.15) and the relationship of the limbic system to overall brain structure (Figure 49.14). A new Problem-Solving Exercise in Chapter 45 taps into student interest in medical mysteries through a case study that explores the science behind laboratory testing and diagnosis. Content updates help students appreciate the continued evolution of our understanding of even familiar phenomena, such as the sensation of thirst (Concept 44.4) and the locomotion of kangaroos and jellies (Concept 50.6). Furthermore, new text and figures introduce students to cutting-edge technology relating to such topics as RNA-based antiviral defense in invertebrates (Figure 43.4) and rapid, comprehensive characterization of viral exposure (Figure 43.24), as well as recent discoveries regarding brown fat in adult humans (Figure 40.16), the **microbiome** (Figure 41.17), parthenogenesis (Concept 46.1), and magnetoreception (Concept 50.1). As always, there is fine-tuning of pedagogy, as in discussions of the complementary roles of inactivation and voltage gating of ion channels during action potential formation (Concept 48.3) and of the experimental characterization of genetic determinants in bird migration (Figure 51.24).

▼ Figure 41.17 Variation in human gut microbiome at different life stages.

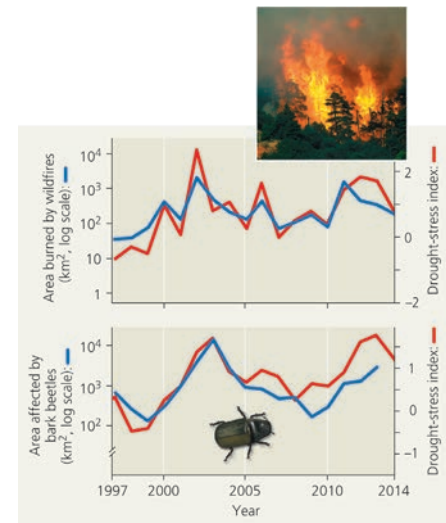


UNIT 8 ECOLOGY

The Ecology Unit has been extensively revised for the Eleventh Edition. We have reorganized and improved the conceptual framework with which students are introduced to the following core ecological topics: life tables, per capita population growth, intrinsic rate of increase (r), exponential population growth, logistic population growth, density dependence, species interactions (in particular, parasitism, commensalism, and mutualism), and MacArthur and Wilson's island biogeography model. The revision also includes a deeper integration of evolutionary principles, including a new Key Concept (52.5) and two new figures (Figures 52.22 and 52.23) on the reciprocal effects of ecology and evolution, new material in Concept 52.4 on how the geographic distributions of species are shaped by a combination of evolutionary history and ecological factors, and five new Make Connections Questions that ask students to examine how ecological and evolutionary mechanisms interact. In keeping with our goal of expanding and strengthening our coverage of climate change, we have added a new discussion and a new figure (Figure 52.20) on how climate change has affected the distribution of a key-stone species, a new section of text in

Concept 55.2 on how climate change affects NPP, a new figure (Figure 55.8) on how **climate change** has caused an increase in wildfires and insect outbreaks, a new Problem-Solving Exercise in Chapter 55 that explores how insect outbreaks induced by climate change can cause an ecosystem to switch from a carbon sink to a carbon source, a new figure (Figure 56.29) on

▼ Figure 55.8 Climate change, wildfires, and insect outbreaks.



the greenhouse effect, new text in Concept 56.4 on biological effects of climate change, and a new Make Connections Figure (Figure 56.30) on how climate change affects all levels of biological organization. Additional updates include a new figure (Figure 53.25) on per capita ecological footprints, a new chapter-opening story in Chapter 54 on a seemingly unlikely mutualism between a shrimp and a much larger predatory fish, new text in Concept 54.1 emphasizing that each partner in a mutualism experiences both benefits and costs, new text in Concept 54.1 describing how the outcome of an ecological interaction can change over time, two new figures (Figures 54.29 and 54.30) on the island equilibrium model, a new figure (Figure 54.31) documenting two shrew species as unexpected hosts of the Lyme disease, new text in Concept 56.1 comparing extinction rates today with those typically seen in the fossil record, and a new discussion and figure (Figure 56.22) on the restoration of a degraded urban stream.

Ready-to-Go Teaching Modules for Instructors

NEW! Ready-to-Go Teaching Modules help instructors efficiently make use of the best teaching tools before, during, and after class.

Campbell Biology, Eleventh Edition

Ready-to-Go Teaching Modules




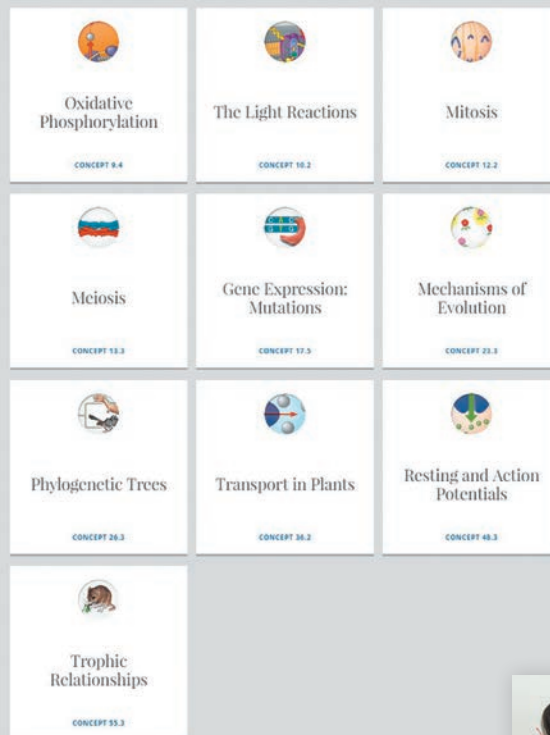
Ready-to-Go Teaching Modules provide instructors with easy-to-use teaching tools for the toughest topics in General Biology.

Assign ready-made activities and assignments for before, during, and after class.

Incorporate active learning with class-tested resources from biology instructors.

Take full advantage of MasteringBiology and Learning Catalytics™, the powerful “bring your own device” student assessment system.





The **Ready-to-Go Teaching Modules** incorporate the best that the text, MasteringBiology, and Learning Catalytics have to offer, along with new ideas for in-class activities. The modules can be accessed through the Instructor Resources area of MasteringBiology.

Instructors can easily incorporate **active learning** into their courses using suggested activity ideas and questions. Videos demonstrate how the activities can be used in class.



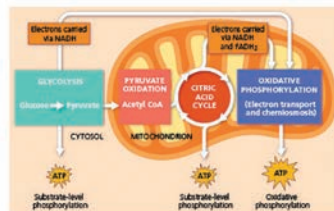
Learning Catalytics™ allows students to use their smartphone, tablet, or laptop to respond to questions in class. Visit learningcatalytics.com.

The following conditions were detected in a mutant cell:

The cell is running out of ATP, while ADP is building up to very high levels. NADH is building up to very high levels, while the level of NAD⁺ is becoming very low.

The amount of protons in the intermembrane space and in the matrix is becoming more equal (the strength of the proton gradient is decreasing/weakening).

Use this information to predict which stage of cellular respiration is not functioning normally in this mutant cell.



- glycolysis
- citric acid cycle
- pyruvate oxidation
- electron transport chain
- ATP synthase



See the Big Picture

Each chapter is organized around a framework of 3 to 7 **Key Concepts** that focus on the big picture and provide a context for supporting details.

Every chapter opens with a visually dynamic **photo** accompanied by an **intriguing question** that invites students into the chapter.



Figure 22.1 How is its resemblance to a fallen leaf helpful to this moth?

The **List of Key Concepts** introduces the big ideas covered in the chapter.


KEY CONCEPTS

22.1 The Darwinian revolution challenged traditional views of a young Earth inhabited by unchanging species

22.2 Descent with modification by natural selection explains the adaptations of organisms and the unity and diversity of life

22.3 Evolution is supported by an overwhelming amount of scientific evidence

▼ Juvenile stage (caterpillar) of the dead-leaf moth



Endless Forms Most Beautiful

A hungry bird in the Peruvian rain forest would have to look very closely to spot a “dead-leaf moth” (*Oxytenis modesta*), which blends in well with its forest floor habitat (Figure 22.1). This distinctive moth is a member of a diverse group, the more than 120,000 species of lepidopteran insects (moths and butterflies). All lepidopterans have a juvenile stage characterized by a well-developed head and many chewing mouthparts: the ravenous, efficient feeding machines we call caterpillars. (The caterpillar stage of the dead-leaf moth is also protected by its appearance: When threatened, it weaves its head back and forth, resembling a snake about to strike.) As adults, all lepidopterans share other features, such as three pairs of legs and two pairs of wings covered with small scales. But the many lepidopterans also differ from one another. How did there come to be so many different moths and butterflies, and what causes their similarities and differences?

The moth in Figure 22.1 and its many close relatives illustrate three key observations about life:

- the striking ways in which organisms are suited for life in their environments (Here and throughout this text, the term *environment* refers to other organisms as well as to the physical aspects of an organism’s surroundings.)
- the many shared characteristics (unity) of life
- the rich diversity of life

When you see this blue icon, log in to **MasteringBiology** and go to the Study Area for digital resources.

Get Ready for This Chapter

After reading a Key Concept section, students can check their understanding using the **Concept Check Questions**.

Questions throughout the chapter encourage students to **read the text actively**.

What If? Questions ask students to apply what they’ve learned.

Make Connections Questions ask students to relate content in the chapter to material presented earlier in the course.

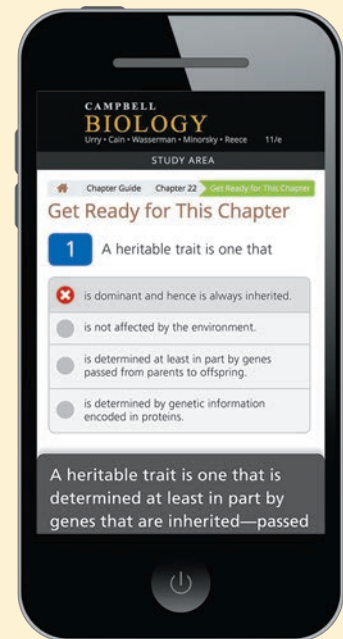
CONCEPT CHECK 22.2

1. How does the concept of descent with modification explain both the unity and diversity of life?
2. **WHAT IF? >** If you discovered a fossil of an extinct mammal that lived high in the Andes, would you predict that it would more closely resemble present-day mammals from South American jungles or present-day mammals that live high in Asian mountains? Explain.
3. **MAKE CONNECTIONS >** Review the relationship between genotype and phenotype (see Figures 14.5 and 14.6). Suppose that in a particular pea population, flowers with the white phenotype are favored by natural selection. Predict what would happen over time to the frequency of the *p* allele in the population, and explain your reasoning.

For suggested answers, see Appendix A.

MB Get Ready for This Chapter

NEW! Get Ready for This Chapter questions provide a quick check of students’ knowledge of basic information needed to learn the new content of a chapter, with feedback.



These questions are available as MasteringBiology assignments and as self-study quizzes in the Study Area.

The **Summary of Key Concepts** refocuses students on the main points of the chapter.



VOCAB SELF-QUIZ
goo.gl/6u55ks



PRACTICE TEST
goo.gl/CUYGKD

NEW! QR codes and URLs at the end of every chapter give students quick access to **Vocabulary Self-Quizzes** and **Practice Tests** on their smartphones, tablets, and computers.

22 Chapter Review

SUMMARY OF KEY CONCEPTS

CONCEPT 22.1

The Darwinian revolution challenged traditional views of a young Earth inhabited by unchanging species (pp. 467–469)

- Darwin proposed that life's diversity arose from ancestral species through natural selection, a departure from prevailing views.
- Cuvier studied fossils but denied that evolution occurs; he proposed that sudden catastrophic events in the past caused species to disappear from an area.
- Hutton and Lyell thought that geologic change could result from gradual mechanisms that operated in the past in the same manner as they do today.
- Lamarck hypothesized that species evolve, but the underlying mechanisms he proposed are not supported by evidence.

1 Why was the age of Earth important for Darwin's ideas about evolution?

CONCEPT 22.2

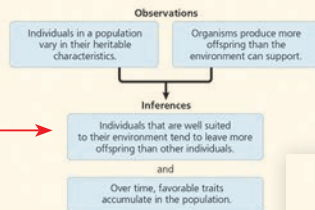
Descent with modification by natural selection explains the adaptations of organisms and the unity and diversity of life (pp. 469–474)

- Darwin's experiences during the voyage of the *Beagle* gave rise to his idea that new species originate from ancestral forms through the accumulation of adaptations. He refined his theory for many years and finally published it in 1859 after learning that Wallace had come to the same idea.

482 UNIT FOUR Mechanisms of Evolution

Go to **MasteringBiology™** for Videos, Animations, Vocab Self-Quiz, Practice Tests, and more in the Study Area.

- In *The Origin of Species*, Darwin proposed that over long periods of time, descent with modification produced the rich diversity of life through the mechanism of **natural selection**.



2 Describe how overproduction and heritable variation relate to evolution by natural selection.

CONCEPT 22.3

Evolution is supported by an overwhelming amount of scientific evidence (pp. 475–482)

- Researchers have directly observed natural selection leading to adaptive evolution in many studies, including research on soapberry bug populations and on MRSA.

- Organisms share characteristics because of common descent (**homology**) or because natural selection affects independently evolving species in similar environments in similar ways (**convergent evolution**).
- Fossils show that past organisms differed from living organisms, that many species have become extinct, and that species have evolved over long periods of time; fossils also document the evolutionary origin of new groups of organisms.
- Evolutionary theory can explain some biogeographic patterns.

3 Summarize the different lines of evidence supporting the hypothesis that cetaceans descended from land mammals and are closely related to even-toed ungulates.

TEST YOUR UNDERSTANDING

Level 1: Knowledge/Comprehension

- Which of the following is *not* an observation or inference on which natural selection is based?
 - There is heritable variation among individuals.
 - Poorly adapted individuals never produce offspring.
 - Species produce more offspring than the environment can support.
 - Only a fraction of an individual's offspring may survive.
- Which of the following observations helped Darwin shape his concept of descent with modification?
 - Species diversity declines farther from the equator.
 - Fewer species live on islands than on the nearest continents.
 - Birds live on islands located farther from the mainland than the birds' maximum nonstop flight distance.
 - South American temperate plants are more similar to the tropical plants of South America than to the temperate plants of Europe.

Level 2: Application/Analysis

- Within six months of effectively using methicillin to treat *S. aureus* infections in a community, all new *S. aureus* infections were caused by MRSA. How can this best be explained?
 - A patient must have become infected with MRSA from another community.
 - In response to the drug, *S. aureus* began making drug-resistant versions of the protein targeted by the drug.
 - Some drug-resistant bacteria were present at the start of treatment, and natural selection increased their frequency.
 - S. aureus* evolved to resist vaccines.
- The upper forelimbs of humans and bats have fairly similar skeletal structures, whereas the corresponding bones in whales have very different shapes and proportions. However, genetic data suggest that all three kinds of organisms diverged from a common ancestor at about the same time. Which of the following is the most likely explanation for these data?
 - Forelimb evolution was adaptive in people and bats, but not in whales.
 - Natural selection in an aquatic environment resulted in significant changes to whale forelimb anatomy.
 - Genes mutate faster in whales than in humans or bats.
 - Whales are not properly classified as mammals.



PRACTICE TEST
goo.gl/CUYGKD

- DNA sequences in many human genes are very similar to the sequences of corresponding genes in chimpanzees. The most likely explanation for this result is that
 - humans and chimpanzees share a relatively recent common ancestor.
 - humans evolved from chimpanzees.
 - chimpanzees evolved from humans.
 - convergent evolution led to the DNA similarities.

Level 3: Synthesis/Evaluation

- EVOLUTION CONNECTION** Explain why anatomical and molecular features often fit a similar nested pattern. In addition, describe a process that can cause this not to be the case.
- SCIENTIFIC INQUIRY • DRAW IT** Mosquitoes resistant to the pesticide DDT first appeared in India in 1959, but now are found throughout the world. (a) Graph the data in the table below. (b) Examine the graph, then hypothesize why the percentage of mosquitoes resistant to DDT rose rapidly. (c) Suggest an explanation for the global spread of DDT resistance.

Month	0	8	12
Mosquitoes Resistant* to DDT	4%	45%	77%

*Mosquitoes were considered resistant if they were not killed within 1 hour of receiving a dose of 4% DDT.

Data from C. F. Curtis et al., Selection for and against insecticide resistance and possible methods of inhibiting the evolution of resistance in mosquitoes, *Ecological Entomology* 3:273–287 (1978).

- WRITE ABOUT A THEME: INTERACTIONS** Write a short essay (about 100–150 words) evaluating whether changes to an organism's physical environment are likely to result in evolutionary change. Use an example to support your reasoning.

9. SYNTHESIZE YOUR KNOWLEDGE



This honeypot ant (genus *Myrmecopsys*) can store liquid food inside its expandable abdomen. Consider other ants you are familiar with, and explain how a honeypot ant exemplifies three key features of life: adaptation, unity, and diversity.

For selected answers, see Appendix A.

For additional practice questions, check out the **Dynamic Study Modules** in MasteringBiology. You can use them to study on your smartphone, tablet, or computer anytime, anywhere!

Summary of Key Concepts Questions check students' understanding of a key idea from each concept.

Summary Figures recap key information visually.

Evolution, the fundamental theme of biology, is emphasized throughout. Every chapter has a section explicitly relating the chapter content to evolution:

Evolution of the Genetic Code

EVOLUTION The genetic code is nearly universal, shared by organisms from the simplest bacteria to the most complex plants and animals. The mRNA codon CCG, for instance, translated as the amino acid proline in all organisms whose genetic code has been examined. In laboratory experiments genes can be transcribed and translated after being transplanted from one species to another, sometimes with quite striking results, as shown in **Figure 17.7**. Bacteria can be programmed by the insertion of human genes to synthesize certain human proteins for medical use, such as insulin. Such applications have produced many exciting developments in the area of biotechnology (see Concept 20.4).

Figure 17.7 Evidence for evolution: expression of genes from different species. Because diverse forms of life share a common genetic code due to their shared ancestry, one species can be programmed to produce proteins characteristic of a second species by introducing DNA from the second species into the first.



(a) Tobacco plant expressing a firefly gene. The yellow glow is produced by a chemical reaction catalyzed by the protein product of the firefly gene.
(b) Pig expressing a jellyfish gene. Researchers injected a jellyfish gene for a fluorescent protein into fertilized pig eggs. One developed into this fluorescent pig.

Evolution Connection Questions are included in every Chapter Review.

Synthesize Your Knowledge Questions ask students to apply their understanding of the chapter content to explain an intriguing photo.

Build Visual Skills

NEW! Visualizing Figures teach students how to interpret diagrams and models in biology. Embedded questions give students practice applying visual skills as they read the figure.

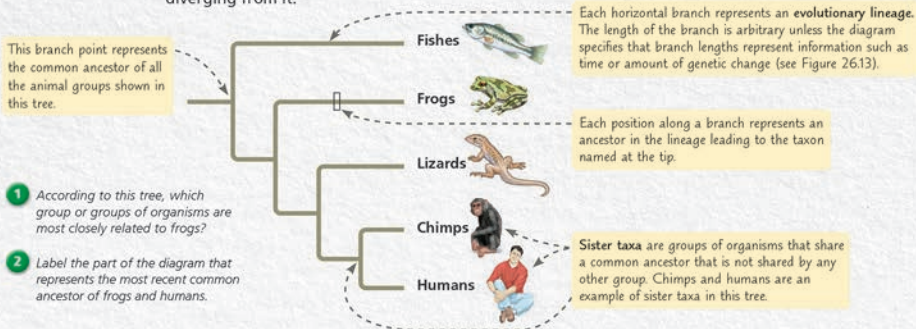
For more practice, each Visualizing Figure is accompanied by an automatically graded assignment in MasteringBiology with feedback for students.

Figure 26.5 Visualizing Phylogenetic Relationships

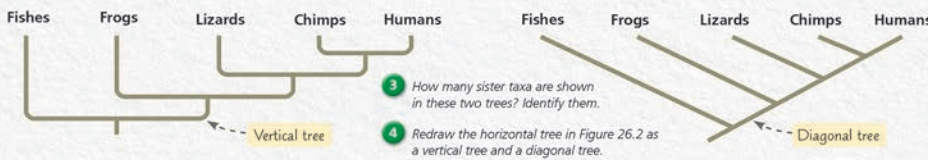
A phylogenetic tree visually represents a hypothesis of how a group of organisms are related. This figure explores how the way a tree is drawn conveys information.

Instructors: Additional questions related to this Visualizing Figure can be assigned in MasteringBiology.

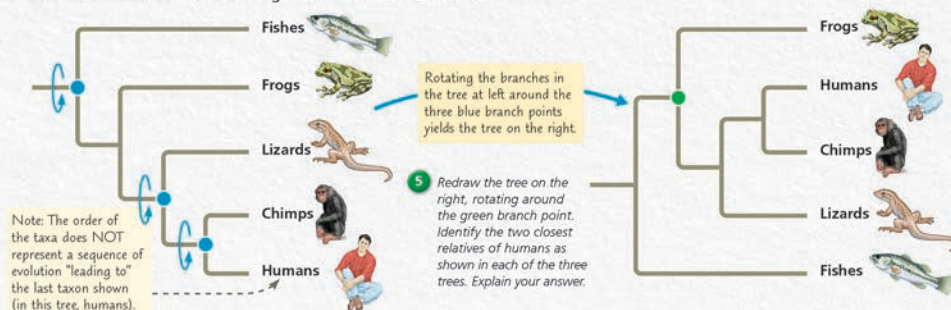
Parts of a Tree This tree shows how the five groups of organisms at the tips of the branches, called taxa, are related. Each **branch point** represents the common ancestor of the evolutionary lineages diverging from it.



Alternative Forms of Tree Diagrams These diagrams are referred to as "trees" because they use the visual analogy of branches to represent evolutionary lineages diverging over time. In this text, trees are usually drawn horizontally, as shown above, but the same tree can be drawn vertically or diagonally without changing the relationships it conveys.



Rotating Around Branch Points Rotating the branches of a tree around a branch point does not change what they convey about evolutionary relationships. As a result, the order in which taxa appear at the branch tips is not significant. What matters is the branching pattern, which signifies the order in which the lineages have diverged from common ancestors.



Visualizing Figures include:

Figure 5.16 Visualizing Proteins, p. 79

Figure 6.32 Visualizing the Scale of the Molecular Machinery in a Cell, pp. 122-123

Figure 16.7 Visualizing DNA, p. 319

Figure 25.8 Visualizing the Scale of Geologic Time, pp. 530-531

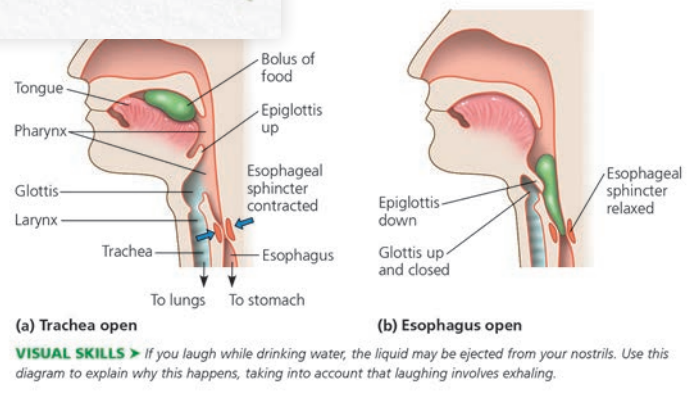
Figure 26.5 Visualizing Phylogenetic Relationships, shown at left and on p. 554

Figure 35.11 Visualizing Primary and Secondary Growth, p. 765

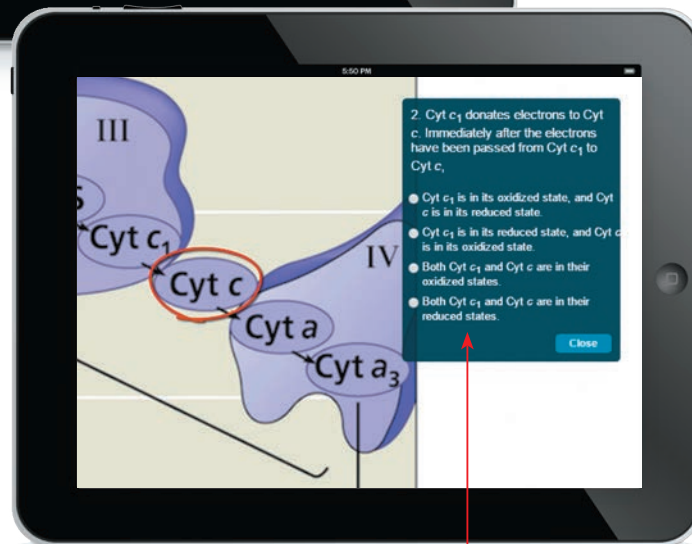
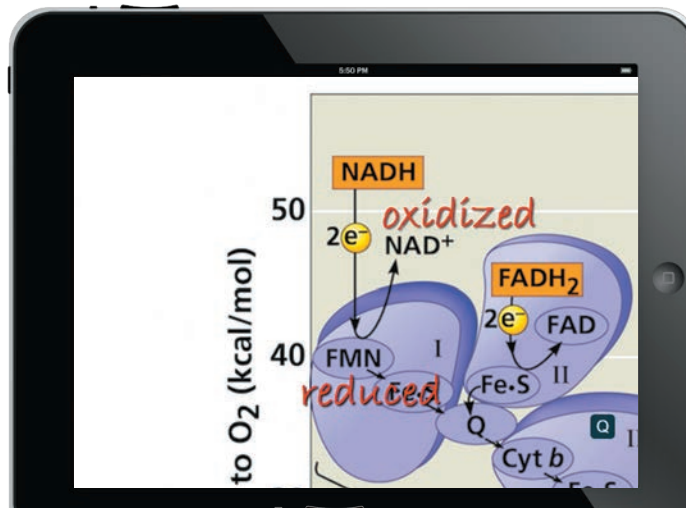
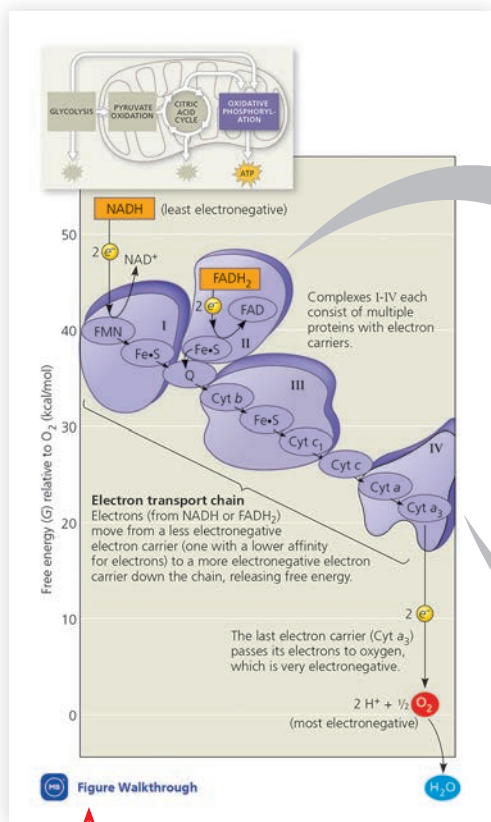
Figure 47.8 Visualizing Gastrulation, p. 1048

Figure 55.13 Visualizing Biogeochemical Cycles, p. 1247

NEW! Visual Skills Questions give students practice interpreting illustrations and photos in the text.



NEW! Figure Walkthroughs guide students through key figures with narrated explanations, figure markups, and questions that reinforce important points.



A note in the print book lets students and instructors know when a Figure Walkthrough is available in the Study Area.

Questions embedded in each Figure Walkthrough encourage students to be active participants in their learning. The Figure Walkthroughs can also be assigned in MasteringBiology with higher-level questions.

Figure 2.17
Photosynthesis: a solar-powered rearrangement of matter. *Elodea*, a freshwater plant, produces sugar by rearranging the atoms of carbon dioxide and water in the chemical process known as photosynthesis, which is powered by sunlight. Much of the sugar is then converted to other food molecules. Oxygen gas (O₂) is a by-product of photosynthesis; notice the bubbles of O₂ gas escaping from the leaves submerged in water.



DRAW IT ➤ Add labels and arrows on the photo showing the reactants and products of photosynthesis as it takes place in a leaf.

EXPANDED! Draw It exercises give students practice creating visuals. Students are asked to put pencil to paper and draw a structure, annotate a figure, or graph experimental data.

Make Connections Visually

Eleven **Make Connections Figures** pull together content from different chapters, providing a visual representation of “big picture” relationships.

Make Connections Figures include:

Figure 5.26 Contributions of Genomics and Proteomics to Biology, p. 88

Figure 10.23 The Working Cell, pp. 208-209

Figure 18.27 Genomics, Cell Signaling, and Cancer, pp. 390-391

Figure 23.18 The Sickle-Cell Allele, shown at right and on pp. 500-501 →

Figure 33.9 Maximizing Surface Area, p. 693

NEW! Figure 37.10 Mutualism Across Kingdoms and Domains, p. 811

Figure 39.27 Levels of Plant Defenses Against Herbivores, pp. 866-867

Figure 40.23 Life Challenges and Solutions in Plants and Animals, pp. 892-893

Figure 44.17 Ion Movement and Gradients, p. 991

Figure 55.19 The Working Ecosystem, pp. 1254-1255

NEW! Figure 56.30 Climate Change Has Effects at All Levels of Biological Organization, pp. 1278-1279

NEW! Media references integrated into the text

direct students to digital content in the MasteringBiology Study Area that will help them prepare for class and succeed on exams. Video resources include HHMI BioInteractive Short Films (documentary-quality movies from the Howard Hughes Medical Institute) and much more. →

▼ **Figure 23.18 MAKE CONNECTIONS**

The Sickle-Cell Allele

This child has sickle-cell disease, a genetic disorder that strikes individuals that have two copies of the sickle-cell allele. This allele causes an abnormality in the structure and function of hemoglobin, the oxygen-carrying protein in red blood cells. Although sickle-cell disease is lethal if not treated, in some regions the sickle-cell allele can reach frequencies as high as 15–20%. How can such a harmful allele be so common?

Events at the Molecular Level

- Due to a point mutation, the sickle-cell allele differs from the wild-type allele by a single nucleotide. (See Figure 17.26.)
- The resulting change in one amino acid leads to hydrophobic interactions between the sickle-cell hemoglobin proteins under low-oxygen conditions.
- As a result, the sickle-cell proteins bind to each other in chains that together form a fiber.

Consequences for Cells

- The abnormal hemoglobin fibers distort the red blood cell into a sickle shape under low-oxygen conditions, such as those found in blood vessels returning to the heart.

An adenine replaces a thymine in the template strand of the sickle-cell allele, changing one codon in the mRNA produced during transcription. This change causes an amino-acid change in sickle-cell hemoglobin: A valine replaces a glutamic acid at one position. (See Figure 5.19.)

HHMI Video: The Making of the Fittest: Natural Selection in Humans (Sickle-Cell Disease)

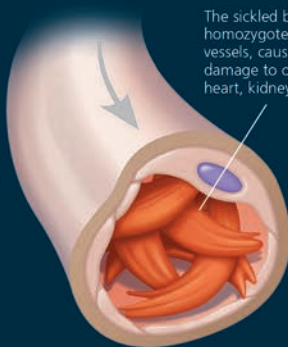
500 UNIT FOUR Mechanisms of Evolution



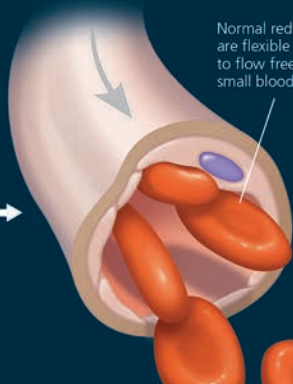
Infected mosquitoes spread malaria when they bite people. (See Figure 28.16.)

Effects on Individual Organisms

- The formation of sickled red blood cells causes homozygotes with two copies of the sickle-cell allele to have sickle-cell disease.
- Some sickling also occurs in heterozygotes, but not enough to cause the disease; they have sickle-cell trait. (See Figure 14.17.)



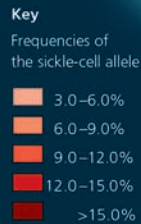
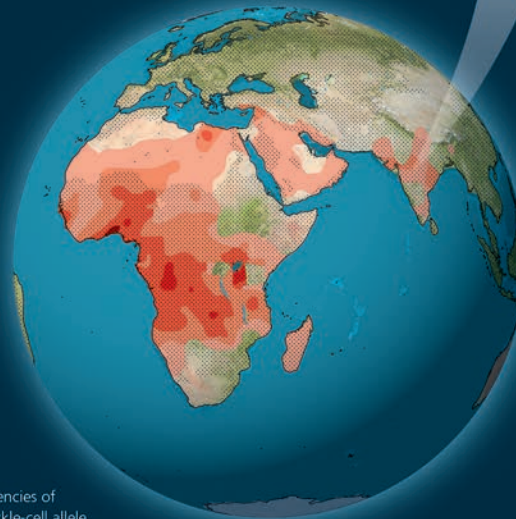
The sickled blood cells of a homozygote block small blood vessels, causing great pain and damage to organs such as the heart, kidney, and brain.



Normal red blood cells are flexible and are able to flow freely through small blood vessels.

Evolution in Populations

- Homozygotes with two sickle-cell alleles are strongly selected against because of mortality caused by sickle-cell disease. In contrast, heterozygotes experience few harmful effects from sickling yet are more likely to survive malaria than are homozygotes.
- In regions where malaria is common, the net effect of these opposing selective forces is heterozygote advantage. This has caused evolutionary change in populations—the products of which are the areas of relatively high frequencies of the sickle-cell allele shown in the map below.



Distribution of malaria caused by *Plasmodium falciparum* (a parasitic unicellular eukaryote)

MAKE CONNECTIONS > In a region free of malaria, would individuals who are heterozygous for the sickle-cell allele be selected for or selected against? Explain.

Make Connections Questions in every chapter ask students to relate content in the chapter to material presented earlier in the course.

Practice Scientific Skills

Scientific Skills Exercises use real data to build key skills needed for biology, including **data analysis**, **graphing**, **experimental design**, and **math skills**.

Each Scientific Skills Exercise is based on an **experiment related to the chapter content**.

Most Scientific Skills Exercises use **data from published research**, which is cited in the exercise.

Questions build in difficulty, walking students through new skills step by step and providing opportunities for higher-level critical thinking.

SCIENTIFIC SKILLS EXERCISE

Interpreting a Scatter Plot with Two Sets of Data

Is Glucose Uptake into Cells Affected by Age? Glucose, an important energy source for animals, is transported into cells by facilitated diffusion using protein carriers. In this exercise, you will interpret a graph with two sets of data from an experiment that examined glucose uptake over time in red blood cells from guinea pigs of different ages. You will determine if the cells' rate of glucose uptake depended on the age of the guinea pigs.

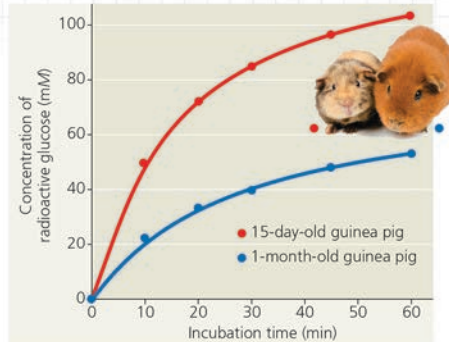
How the Experiment Was Done Researchers incubated guinea pig red blood cells in a 300 mM (millimolar) radioactive glucose solution at pH 7.4 at 25°C. Every 10 or 15 minutes, they removed a sample of cells and measured the concentration of radioactive glucose inside those cells. The cells came from either a 15-day-old or a 1-month-old guinea pig.

Data from the Experiment When you have multiple sets of data, it can be useful to plot them on the same graph for comparison. In the graph here, each set of dots (of the same color) forms a scatter plot, in which every data point represents two numerical values, one for each variable. For each data set, a curve that best fits the points has been drawn to make it easier to see the trends. (For additional information about graphs, see the Scientific Skills Review in Appendix F.)

INTERPRET THE DATA

1. First make sure you understand the parts of the graph. (a) Which variable is the independent variable—the variable controlled by the researchers? (b) Which variable is the dependent variable—the variable that depended on the treatment and was measured by the researchers? (c) What do the red dots represent? (d) The blue dots?
2. From the data points on the graph, construct a table of the data. Put "Incubation Time (min)" in the left column of the table.

Glucose Uptake over Time in Guinea Pig Red Blood Cells



Data from T. Kondo and E. Beutler, Developmental changes in glucose transport of guinea pig erythrocytes, *Journal of Clinical Investigation* 65:1–4 (1980).

3. What does the graph show? Compare and contrast glucose uptake in red blood cells from 15-day-old and 1-month-old guinea pigs.
4. Develop a hypothesis to explain the difference between glucose uptake in red blood cells from 15-day-old and 1-month-old guinea pigs. (Think about how glucose gets into cells.)
5. Design an experiment to test your hypothesis.

Instructors: A version of this Scientific Skills Exercise can be assigned in MasteringBiology.

All Scientific Skills Exercises are available as **interactive assignments in MasteringBiology** that are automatically graded.

SCIENTIFIC SKILLS EXERCISES are available for every chapter:

- 1 Interpreting a Pair of Bar Graphs, p. 23
- 2 Calibrating a Standard Radioactive Isotope Decay Curve and Interpreting Data, p. 33
- 3 Interpreting a Scatter Plot with a Regression Line, p. 54
- 4 Working with Moles and Molar Ratios, p. 58
- 5 Analyzing Polypeptide Sequence Data, p. 89
- 6 Using a Scale Bar to Calculate Volume and Surface Area of a Cell, p. 99
- 7 Interpreting a Scatter Plot with Two Sets of Data, shown above and on p. 136
- 8 Making a Line Graph and Calculating a Slope, p. 157
- 9 Making a Bar Graph and Evaluating a Hypothesis, p. 179
- 10 Making Scatter Plots with Regression Lines, p. 205
- 11 Using Experiments to Test a Model*
- 12 Interpreting Histograms, p. 250
- 13 Making a Line Graph and Converting Between Units of Data, p. 264
- 14 Making a Histogram and Analyzing a Distribution Pattern, p. 283
- 15 Using the Chi-Square (χ^2) Test, p. 304
- 16 Working with Data in a Table, p. 318
- 17 Interpreting a Sequence Logo, p. 351
- 18 Analyzing DNA Deletion Experiments, p. 373
- 19 Analyzing a DNA Sequence-Based Phylogenetic Tree to Understand Viral Evolution, p. 409
- 20 Analyzing Quantitative and Spatial Gene Expression Data*
- 21 Reading an Amino Acid Sequence Identity Table, p. 456
- 22 Making and Testing Predictions, p. 481
- 23 Using the Hardy-Weinberg Equation to Interpret Data and Make Predictions, p. 491
- 24 Identifying Independent and Dependent Variables, Making a Scatter Plot, and Interpreting Data, p. 511
- 25 Estimating Quantitative Data from a Graph and Developing Hypotheses, p. 536
- 26 Using Protein Sequence Data to Test an Evolutionary Hypothesis, p. 568
- 27 Calculating and Interpreting Means and Standard Errors, p. 588

Apply Scientific Skills to Solving Problems

NEW! Problem-Solving Exercises guide students in applying scientific skills and interpreting real data in the context of solving a real-world problem.

PROBLEM-SOLVING EXERCISE

Are you a victim of fish fraud?

When buying salmon, perhaps you prefer the more expensive wild-caught Pacific salmon (*Oncorhynchus* species) over farmed Atlantic salmon (*Salmo salar*). But studies reveal that about 40% of the time, you aren't getting the fish you paid for! Watch the video in the MasteringBiology Study Area for more information.



ABC News Video: Fake Fish in Stores and Restaurants

Instructors: A version of this Problem-Solving Exercise can be assigned in Chapter 5 of MasteringBiology. A more extensive investigation is in Chapter 26 of MasteringBiology.

In this exercise, you will investigate whether a piece of salmon has been fraudulently labeled.

Your Approach The principle guiding your investigation is that DNA sequences from within a species or from closely related species are more similar to each other than are sequences from more distantly related species.

Your Data You've been sold a piece of salmon labeled as coho salmon (*Oncorhynchus kisutch*). To see whether your fish was labeled correctly, you will compare a short DNA sequence from your sample to standard sequences from the same gene for three salmon species. The sequences are:

	Sample labeled as <i>O. kisutch</i> (coho salmon)	5'-CGGCACCGCCTAAGTCTCT-3'
Standard sequences	Sequence for <i>O. kisutch</i> (coho salmon)	5'-AGGCACCGCCTAAGTCTAC-3'
	Sequence for <i>O. keta</i> (chum salmon)	5'-AGGCACCGCCTGAGCCTAC-3'
	Sequence for <i>Salmo salar</i> (Atlantic salmon)	5'-CGGCACCGCCTAAGTCTCT-3'

Your Analysis

1. Scan along the standard sequences (*O. kisutch*, *O. keta*, and *S. salar*), base by base, circling any bases that do not match the sequence from your fish sample.
2. How many bases differ between (a) *O. kisutch* and your fish sample? (b) *O. keta* and the sample? (c) *S. salar* and the sample?
3. For each standard, what percentage of its bases are identical to your sample?
4. Based on these data alone, state a hypothesis for the species identity of your sample. What is your reasoning?

Problem-Solving Exercises include:

Ch. 5: Are you a victim of fish fraud? *Shown at left and on p. 89*

Ch. 11: Can a skin wound turn deadly? *p. 214*

Ch. 17: Are insulin mutations the cause of three infants' neonatal diabetes? *p. 359*

Ch. 24: Is hybridization promoting insecticide resistance in mosquitoes that transmit malaria? *p. 516*

Ch. 34: Can declining amphibian populations be saved by a vaccine? *p. 731*

Ch. 39: How will climate change impact crop productivity? *p. 861*

Ch. 45: Is thyroid regulation normal in this patient? *p. 1008*

Ch. 55: Can an insect outbreak threaten a forest's ability to absorb CO₂ from the atmosphere? *p. 1243*

A version of each Problem-Solving Exercise can also be assigned in MasteringBiology.

- 28 Interpreting Comparisons of Genetic Sequences, *p. 593*
- 29 Making Bar Graphs and Interpreting Data, *p. 627*
- 30 Using Natural Logarithms to Interpret Data, *p. 637*
- 31 Interpreting Genomic Data and Generating Hypotheses, *p. 655*
Synthesizing Information from Multiple Data Sets*
- 32 Calculating and Interpreting Correlation Coefficients, *p. 676*
- 33 Understanding Experimental Design and Interpreting Data, *p. 698*
- 34 Determining the Equation of a Regression Line, *p. 749*
- 35 Using Bar Graphs to Interpret Data, *p. 760*
- 36 Calculating and Interpreting Temperature Coefficients, *p. 788*
- 37 Making Observations, *p. 810*
- 38 Using Positive and Negative Correlations to Interpret Data, *p. 832*
- 39 Interpreting Experimental Results from a Bar Graph, *p. 862*
- 40 Interpreting Pie Charts, *p. 890*
- 41 Interpreting Data from an Experiment with Genetic Mutants, *p. 916*
- 42 Making and Interpreting Histograms, *p. 936*

- 43 Comparing Two Variables on a Common x-Axis, *p. 971*
- 44 Describing and Interpreting Quantitative Data, *p. 979*
- 45 Designing a Controlled Experiment, *p. 1012*
- 46 Making Inferences and Designing an Experiment, *p. 1028*
- 47 Interpreting a Change in Slope, *p. 1047*
- 48 Interpreting Data Values Expressed in Scientific Notation, *p. 1080*
- 49 Designing an Experiment using Genetic Mutants, *p. 1093*
- 50 Interpreting a Graph with Log Scales, *p. 1134*
- 51 Testing a Hypothesis with a Quantitative Model, *p. 1148*
- 52 Making a Bar Graph and a Line Graph to Interpret Data, *p. 1184*
- 53 Using the Logistic Equation to Model Population Growth, *p. 1198*
- 54 Making a Bar Graph and a Scatter Plot, *p. 1215*
- 55 Interpreting Quantitative Data in a Table, *p. 1245*
- 56 Graphing Cyclic Data, *p. 1276*

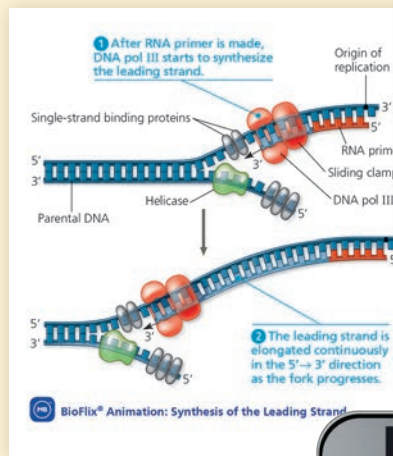
* Available only in MasteringBiology. All other Scientific Skills Exercises are in the print book, eText, and MasteringBiology.

Bring Biology to Life

NEW! Over 450 carefully chosen and edited **videos and animations** have been integrated into the print book, MasteringBiology Study Area, and eText 2.0 at point of use to help students learn biology visually. (eText 2.0 will be live for Fall 2017 classes.)

Media references in the print book direct students to digital resources in the Study Area and eText 2.0:

- **NEW!** Get Ready for This Chapter questions
- **NEW!** Figure Walkthroughs
- **NEW!** HHMI BioInteractive Videos and Animations
- **NEW!** QR codes and URLs for easy access to Vocabulary Self-Quizzes and Practice Tests
- BioFlix Animations
- ABC News Videos
- Campbell Interviews *and much more*



In April 1953, Watson and Crick surprised the scientific world with a succinct, one-page paper that reported their molecular model for DNA: the double helix, which has since become the symbol of molecular biology. Watson and Crick, along with Maurice Wilkins, were awarded the Nobel Prize in 1962 for this work. (Sadly, Rosalind Franklin had died at the age of 37 in 1958 and was thus ineligible for the prize.) The beauty of the double helix model was that the structure of DNA suggested the basic mechanism of its replication.

HHMI Video: Great Discoveries in Science: The Double Helix



Access the complete textbook online!

The Campbell eText includes powerful interactive and customization functions, such as instructor and student note-taking, highlighting, bookmarking, search, and links to glossary terms.

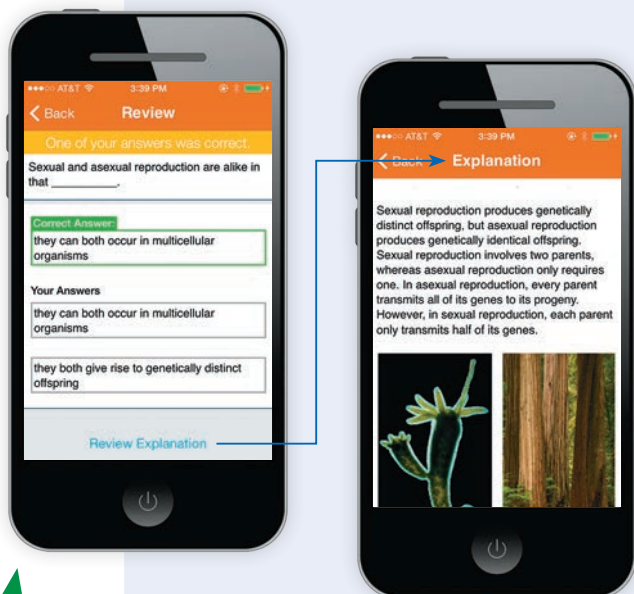
eText 1.0 will be available for Spring 2017 classes.



NEW! eText 2.0 will be available for Fall 2017 classes with all of the above plus links to animations, videos, and quizzes, all accessible from a smartphone, tablet, and computer.

Succeed with MasteringBiology

MasteringBiology improves results by engaging students before, during, and after class.



Before Class

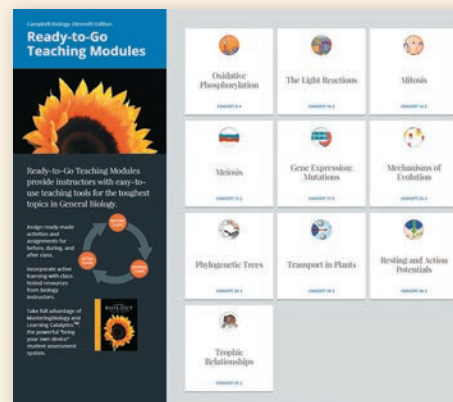
Dynamic Study Modules provide students with multiple sets of questions with extensive feedback so that they can **test, learn, and retest** until they achieve mastery of the textbook material.

NEW! Get Ready for This Chapter quizzes help students review content they need to understand from previous chapters (see p. x).

Pre-Class Reading Quizzes help students pinpoint concepts that they understand and concepts that they need to review.

During Class

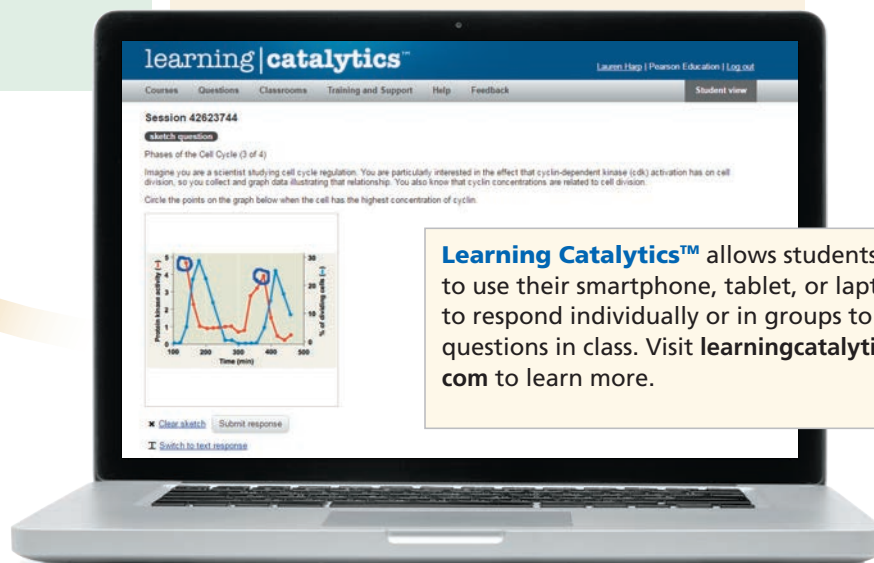
NEW! For ideas for in-class activities, see the Ready-to-Go Teaching Modules (see p. ix).



After Class

Hundreds of self-paced tutorials and coaching activities provide students with individualized coaching with specific hints and feedback on the toughest topics in the course.

Optional Adaptive Follow-up Assignments are based on each student's performance on the original MasteringBiology assignment and provide additional questions and activities tailored to each student's needs.



Learning Catalytics™ allows students to use their smartphone, tablet, or laptop to respond individually or in groups to questions in class. Visit learningcatalytics.com to learn more.

Personalized Coaching in MasteringBiology

Instructors can assign self-paced **MasteringBiology tutorials** that provide students with individualized coaching with specific hints and feedback on the toughest topics in the course.

Part A - Maintaining homeostasis

An animal's body maintains a relatively constant internal environment. How is this accomplished? It is surprisingly similar to the way a thermostat and heating system maintain a relatively constant temperature inside a room. The diagram below shows how a thermostat responds when the temperature becomes too hot or too cold.

Adapted from Biology by Campbell and Reece © Pearson Education, Inc.

Drag the terms on the left to the appropriate blanks on the right to complete the sentences. Not all terms will be used.

negative

decreases

1. This heating system maintains room temperature at or near a particular value, known as the .

2. You open the window, and a blast of icy air enters the room. The temperature drops to 17 degrees Celsius, which acts as a to the heating system.

3. The thermostat is a that detects the stimulus and triggers a response.

4. The heater turns on, and the temperature in the room until it returns to the original setting.

5. The response of the heating system reduces the stimulus. This is an example of feedback.

6. The way this heating system maintains a stable room temperature is similar to the way an animal's body controls many aspects of its internal environment. The maintenance of a relatively constant internal environment is known as .

Submit Hints My Answers Give Up Review Part

1. If a student gets stuck...
2. Specific wrong-answer **feedback** appears in the purple feedback box.

Incorrect; Try Again; 5 attempts remaining
You filled in 1 of 6 blanks incorrectly. For sentence 5, you may want to review positive and negative feedback in Hint 2.

Hint 2. What is the difference between positive and negative feedback?
Let's take a closer look at positive and negative feedback.
Drag each statement into the appropriate bin depending on whether it applies to positive feedback or negative feedback.

the response to a stimulus reduces the stimulus

the response to a stimulus amplifies the stimulus

example: icy cold draft causes room heater to turn on

example: response to low blood glucose raises blood glucose

example: stronger and stronger contractions during childbirth

example: response to high blood glucose lowers blood glucose

positive feedback

negative feedback

Submit My Answers Give Up

3. **Hints** coach students to the correct response.
4. Optional **Adaptive Follow-Up Assignments** are based on the original homework assignment and provide additional coaching and practice as needed.

Question sets in the Adaptive Follow-Up Assignments **continuously adapt** to each student's needs, making efficient use of study time.

Homework: Animal Structure & Function
Due: 11:59pm on Thursday, June 16, 2016
You will receive no credit for items you complete after the assignment is due. [Grading Policy](#)

✓ You completed this assignment. [Start the Adaptive Follow-Up Now.](#)

Homework: Animal Structure & Function Adaptive Follow-Up
Due: 11:59pm on Saturday, June 18, 2016
Parent Assignment: [Homework: Animal Structure & Function](#)
Question Sets: 3

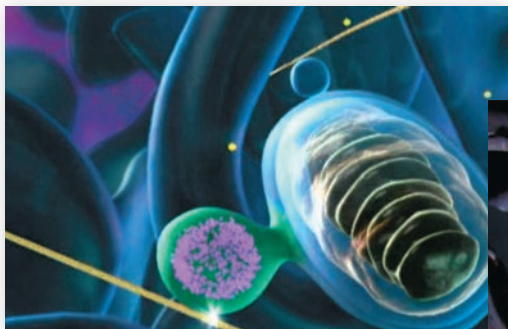
This Adaptive Follow-Up assignment is designed specifically for you based on your performance on the Parent assignment. The system analyzes your responses and personalizes each question set to focus your studies and help you succeed. [Learn more](#)

You received all 10 points for this Adaptive Follow-Up by scoring at or above the Test Out score on the Parent assignment. To learn more about the Test Out score, see the Grading Policy.

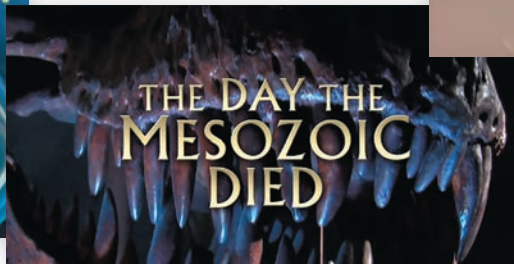
For additional study materials, please visit the [Study Area](#).

Congratulations! You tested out of this Adaptive Follow-Up.

MasteringBiology offers thousands of tutorials, activities, and questions that can be assigned as homework. A few examples are shown below.



BioFlix Tutorials use 3-D, movie-quality animations and coaching exercises to help students master tough topics outside of class. Animations are also available in the Study Area and eText 2.0, and can be shown in class.



EXPANDED! HHMI BioInteractive Short Films, documentary-quality movies from the Howard Hughes Medical Institute, engage students in topics from the discovery of the double helix to evolution, with assignable questions.



NEW! Galápagos Evolution Video Activities, filmed on the Galápagos Islands by Peter and Rosemary Grant, bring to life the dynamic evolutionary processes that impact Darwin's finches on Daphne Major Island. Videos explore important concepts and data from the Grants' field research, with assignable activities.

The **MasteringBiology Gradebook** provides instructors with quick results and easy-to-interpret insights into student performance. Every assignment is automatically graded. Shades of red highlight vulnerable students and challenging assignments.

MasteringBiology®

Biology I (18305/10327)

My Courses + | Course Settings

Course Home | Assignments | Roster | Gradebook | Item Library

Gradebook

Manage | View Learning Outcomes Summary

Filter: Showing Score in All Categories for All Students

Score | Time | Difficulty

Students per page: 25

NAME	Intro SP	Chapter 5	Lab 2	CH5	CH5 Ad. Up	Lab 3	CH5 HW	CH5 H. Up	Lab 4	TOTAL
Class Average	45.5	82.8	83.1	84.0	86.7	91.6	85.0	90.3		81.4
Lea01, Frest...	55.0	83.3	100	100	50.0	95.0	100	100		43.6
Lea02, Frest...	48.7	82.9	98.0	100	86.2	72.9	89.5	89.0		32.8
Lea03, Frest...	34.5	81.9	104	100	94.9	85.0	100	95.0		31.6
Lea04, Frest...	40.3	0.0	34.3	83.7	65.3	00.0	0.0	90.0		27.9
Lea05, Frest...	52.6	78.6	90.0	100	85.2	82.5	97.8	85.0		34.7
Lea07, Frest...	50.0	51.9	101	100	95.9	90.0	98.1	95.0		31.8
Lea08, Frest...	53.6	82.9	100	100	100	95.0	100	100		41.5
Lea09, Frest...	52.6	78.6	104	100	90.8	78.3	100	95.0		35.1
Lea10, Frest...	52.5	78.6	100	100	94.9	92.1	94.6	100		30.4
Lea11, Frest...	62.7	78.2	103	100	92.9	100	100	100		32.6
Lea12, Frest...	53.6	68.6	97.7	100	90.0	100	100	100		32.6
Lea14, Frest...	53.6	74.4	85.3	88.7	89.3	96.8	100	100		30.8
Lea15, Frest...	52.6	81.2	100	100	100	100	100	100		32.8

Student scores on the optional **Adaptive Follow-Up Assignments** are recorded in the gradebook and offer additional diagnostic information for instructors to monitor learning outcomes and more.

Student and Lab Supplements

For Students

Study Guide, Eleventh Edition

by Martha R. Taylor, Ithaca, New York, and Michael Pollock, Mount Royal University

978-0-134-44377-5 / 0-134-44377-2

This popular study aid provides concept maps, chapter summaries, word roots, and a variety of interactive activities including multiple-choice, short-answer essay, art labeling, and graph interpretation questions.

Inquiry in Action: Interpreting Scientific Papers, Fourth Edition*

by Ruth V. Buskirk, University of Texas at Austin and Christopher M. Gillen, Kenyon College

978-0-134-47861-6 / 0-134-47861-4

This guide helps students learn how to read and understand primary research articles. Part A presents complete articles accompanied by questions that help students analyze the article. Related Inquiry Figures are included in the supplement. Part B covers every part of a research paper, explaining the aim of the sections and how the paper works as a whole.

Practicing Biology: A Student Workbook, Sixth Edition*

by Jean Heitz and Cynthia Giffen, University of Wisconsin, Madison

978-0-134-48603-1 / 0-134-48603-X

This workbook offers a variety of activities to suit different learning styles. Activities such as modeling and concept mapping allow students to visualize and understand biological processes. Other activities focus on basic skills, such as reading and drawing graphs.

Biological Inquiry: A Workbook of Investigative Cases, Fifth Edition*

by Margaret Waterman, Southeast Missouri State University and Ethel Stanley, BioQUEST Curriculum Consortium and Beloit College

978-0-134-48646-8 / 0-134-48646-3

This workbook offers ten investigative cases. Each case study requires students to synthesize information from multiple chapters of the text and apply that knowledge to a real-world scenario as they pose hypotheses, gather new information, analyze evidence, graph data, and draw conclusions. A link to a student website is in the Study Area in MasteringBiology.

Study Card, Eleventh Edition

978-0-134-48648-2 / 0-134-48648-X

This quick-reference card provides students with an overview of the entire field of biology, helping them see the connections between topics.

Spanish Glossary for Biology

By Laura P. Zanello, University of California, Riverside

978-0-32183498-0 / 0-321-83498-4

This resource provides definitions in Spanish for the glossary terms.

Into The Jungle: Great Adventures in the Search for Evolution

by Sean B. Carroll, University of Wisconsin, Madison

978-0-32155671-4 / 0-321-55671-2

These nine short tales vividly depict key discoveries in evolutionary biology and the excitement of the scientific process. Online resources available at www.aw-bc.com/carroll.

Get Ready for Biology

by Lori K. Garrett, Parkland College

978-0-32150057-1 / 0-321-50057-1

This engaging workbook helps students brush up on important math and study skills and get up to speed on biological terminology and the basics of chemistry and cell biology. Also available in MasteringBiology.

A Short Guide to Writing About Biology, Ninth Edition

by Jan A. Pechenik, Tufts University

978-0-13414373-6 / 0-134-14373-6

This best-selling writing guide teaches students to think as biologists and to express ideas clearly and concisely through their writing.

For Lab

Investigating Biology Laboratory Manual, Ninth Edition

by Judith Giles Morgan, Emory University, and M. Eloise Brown Carter, Oxford College of Emory University

978-0-13447346-8 / 0-134-47346-9

With its distinctive investigative approach to learning, this best-selling laboratory manual is now more engaging than ever, with full-color art and photos throughout. The lab manual encourages students to participate in the process of science and develop creative and critical-reasoning skills.

Annotated Instructor's Edition for Investigating Biology Laboratory Manual, Ninth Edition

978-0-13451922-7 / 0-134-51922-1

This Annotated Instructor Edition features teaching information including margin notes with suggestions for lab procedures and answers to questions from the Student Edition. Also included is a detailed Teaching Plan at the end of each lab with specific suggestions for organizing labs, including estimated time allotments for each part of the lab and suggestions for encouraging independent thinking and collaborative discussions.

Preparation Guide for Investigating Biology, Ninth Edition

978-013451801-5 / 0-134-51801-2

Contains materials lists, suggested vendors, instructions for preparing solutions and constructing materials, schedules for planning advance preparation, and more. Available for downloading through the "Instructor Resources" area of MasteringBiology.

Pearson Collections Custom Library gives instructors the power to create custom lab manuals using Pearson content as well as original materials. Learn more at www.pearsonhighered.com/collections.

MasteringBiology® Virtual Labs is an online environment that promotes critical thinking skills using virtual experiments and explorations that can supplement or substitute for existing wet labs in microscopy, molecular biology, genetics, ecology, and systematics.

* An Instructor Guide is available for downloading through the "Instructor Resources" area of MasteringBiology.

Instructor Resources

Instructor's Resource CD/DVD-ROM Set for Campbell Biology, Eleventh Edition

978-0-13445458-0 / 0-134-45458-8

The Instructor's Resource DVD Package consists of a multi-disk set of assets for each chapter. Specific features include:

- Editable figures (art and photos) and tables from the text in PowerPoint®
- Prepared PowerPoint Lecture Presentations for each chapter with lecture notes, editable figures (art and photos), tables, and links to animations and videos
- JPEG images, including labeled and unlabeled art, photos from the text, and extra photos
- Clicker Questions in PowerPoint
- 400 instructor animations and videos, including BioFlix® 3-D animations and ABC News Videos
- Test Bank questions in TestGen® software and Microsoft® Word
- Digital Transparencies
- Quick Reference Guide: An at-a-glance reference to all instructor and student media resources available for each chapter

The Instructor Resources area of MasteringBiology includes:

- **NEW!** Ready-to-Go Teaching Modules help instructors efficiently make use of the available teaching tools for the toughest topics. Before-class assignments, in-class activities, and after-class assignments are provided for ease of use. Instructors can incorporate active learning into their course with the suggested activity ideas and clicker questions or Learning Catalytics questions.
- Editable figures (art and photos) and tables from the text in PowerPoint
- Prepared PowerPoint Lecture Presentations for each chapter with lecture notes, editable figures (art and photos), tables, and links to animations and videos
- JPEG images, including labeled and unlabeled art, photos from the text, and extra photos
- Clicker Questions in PowerPoint
- 400 instructor animations and videos, including BioFlix 3-D animations and ABC News Videos
- Test Bank (in Word and TestGen)
- Digital Transparencies
- Answers to Scientific Skills Exercises, Problem-Solving Exercises, Interpret the Data Questions, and Essay Questions; includes Rubric and Tips for Grading Short-Answer Essays
- Instructor Guides for Supplements: Instructor Guide for Practicing Biology: A Student Workbook, Instructor Guide for Biological Inquiry: A Workbook of Investigative Cases, Answer Key for Inquiry in Action: Interpreting Scientific Papers, Investigating Biology Lab Prep Guide, and Investigating Biology Lab Data Tables
- Quick Reference Guide

Printed Test Bank for Campbell Biology, Eleventh Edition

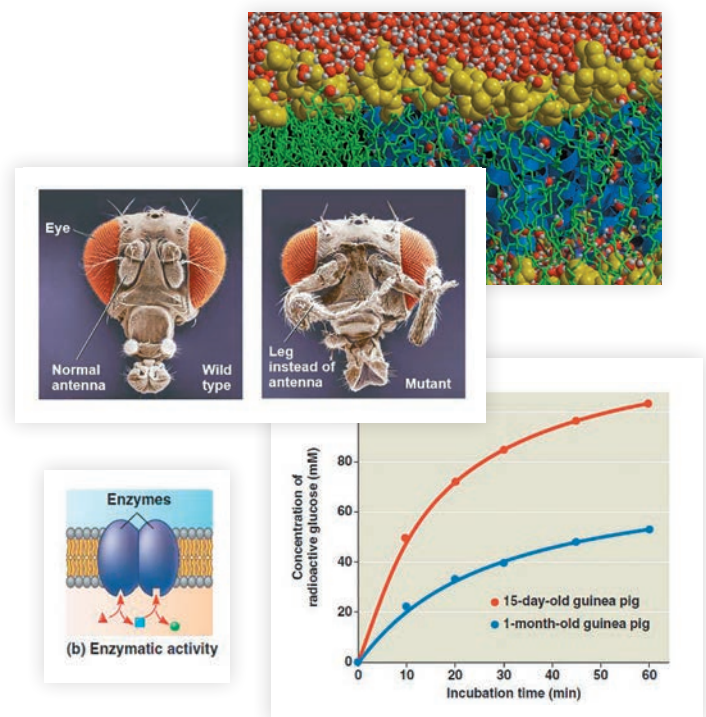
978-0-13447864-7 / 0-134-47864-9

This invaluable resource contains over 4,500 questions, including scenario-based questions and art, graph, and data interpretation questions. In addition to a print version, the Test Bank is available electronically through the "Instructor Resources" area of MasteringBiology, and in the Instructor's Resource DVD Package.

Overview: Orchestrating Life's Processes

- The development of a fertilized egg into an adult requires a precisely regulated program of gene expression
- Understanding this program has progressed mainly by studying **model organisms**
- Stem cells are key to the developmental process
- Orchestrating proper gene expression by all cells is crucial for life

▲ Customizable PowerPoint Lectures provide a jumpstart for instruction.



▲ All of the art, graphs, and photos from the text are provided with customizable labels. More than 1,600 photos from the text and other sources are included.

Who conducted the X-ray diffraction studies that were key to the discovery of the structure of DNA?

- A. Griffith
- B. Franklin
- C. Meselson and Stahl
- D. Chargaff
- E. McClintock

One reason that deserts tend to be found near 30° north and south latitudes is that

- A. deserts are dry.
- B. it's warmer near the equator.
- C. global air circulation and precipitation patterns affect where rain falls.
- D. desert soils are different from tropical rain forest soils.
- E. mountains change rainfall patterns.

▲ Clicker Questions can be used to stimulate effective classroom discussions (for use with or without clickers).

Featured Figures

Visualizing Figures

- 5.16** Visualizing Proteins 79
- 6.32** Visualizing the Scale of the Molecular Machinery in a Cell 122
- 16.7** Visualizing DNA 319
- 25.8** Visualizing the Scale of Geologic Time 530
- 26.5** Visualizing Phylogenetic Relationships 554
- 35.11** Visualizing Primary and Secondary Growth 765
- 47.8** Visualizing Gastrulation 1048
- 55.13** Visualizing Biogeochemical Cycles 1247

Make Connections Figures

- 5.26** Contributions of Genomics and Proteomics to Biology 88
- 10.23** The Working Cell 208
- 18.27** Genomics, Cell Signaling, and Cancer 390
- 23.18** The Sickle-Cell Allele 500
- 33.9** Maximizing Surface Area 693
- 37.10** Mutualism Across Kingdoms and Domains 811
- 39.27** Levels of Plant Defenses Against Herbivores 866
- 40.23** Life Challenges and Solutions in Plants and Animals 892
- 44.17** Ion Movement and Gradients 991
- 55.19** The Working Ecosystem 1254
- 56.30** Climate Change Has Effects at All Levels of Biological Organization 1278

Exploring Figures

- 1.3** Levels of Biological Organization 4
- 5.18** Levels of Protein Structure 80
- 6.3** Microscopy 95
- 6.8** Eukaryotic Cells 100
- 6.30** Cell Junctions in Animal Tissues 120
- 7.19** Endocytosis in Animal Cells 140
- 11.8** Cell-Surface Transmembrane Receptors 218
- 12.7** Mitosis in an Animal Cell 238
- 13.8** Meiosis in an Animal Cell 260
- 16.22** Chromatin Packing in a Eukaryotic Chromosome 330
- 24.3** Reproductive Barriers 506
- 25.7** The Origin of Mammals 529
- 27.16** Selected Major Groups of Bacteria 582
- 28.2** Protistan Diversity 594
- 29.3** Derived Traits of Plants 618
- 29.8** Bryophyte Diversity 624
- 29.14** Seedless Vascular Plant Diversity 630
- 30.7** Gymnosperm Diversity 640
- 30.17** Angiosperm Diversity 648

- 31.10** Fungal Diversity 659
- 33.3** Invertebrate Diversity 685
- 33.43** Insect Diversity 710
- 34.42** Mammalian Diversity 742
- 35.10** Examples of Differentiated Plant Cells 762
- 37.16** Unusual Nutritional Adaptations in Plants 817
- 38.4** Flower Pollination 822
- 38.12** Fruit and Seed Dispersal 830
- 40.5** Structure and Function in Animal Tissues 875
- 41.5** Four Main Feeding Mechanisms of Animals 901
- 44.12** The Mammalian Excretory System 984
- 46.11** Human Gametogenesis 1026
- 49.11** The Organization of the Human Brain 1090
- 50.10** The Structure of the Human Ear 1111
- 50.17** The Structure of the Human Eye 1116
- 52.2** The Scope of Ecological Research 1163
- 52.3** Global Climate Patterns 1164
- 52.12** Terrestrial Biomes 1171
- 52.15** Aquatic Biomes 1177
- 53.18** Mechanisms of Density-Dependent Regulation 1202
- 55.14** Water and Nutrient Cycling 1248
- 55.17** Restoration Ecology Worldwide 1252

Inquiry Figures

- 1.25** Does camouflage affect predation rates on two populations of mice? 21
- 4.2** Can organic molecules form under conditions estimated to simulate those on the early Earth? 57
- 7.4** Do membrane proteins move? 128
- †10.10** Which wavelengths of light are most effective in driving photosynthesis? 194
- 12.9** At which end do kinetochore microtubules shorten during anaphase? 241
- 12.14** Do molecular signals in the cytoplasm regulate the cell cycle? 245
- 14.3** When F_1 hybrid pea plants self- or cross-pollinate, which traits appear in the F_2 generation? 271
- 14.8** Do the alleles for one character segregate into gametes dependently or independently of the alleles for a different character? 276
- †15.4** In a cross between a wild-type female fruit fly and a mutant white-eyed male, what color eyes will the F_1 and F_2 offspring have? 297
- 15.9** How does linkage between two genes affect inheritance of characters? 301
- 16.2** Can a genetic trait be transferred between different bacterial strains? 315
- 16.4** Is protein or DNA the genetic material of phage T2? 316

- *†16.11** Does DNA replication follow the conservative, semiconservative, or dispersive model? 322
- 17.3** Do individual genes specify the enzymes that function in a biochemical pathway? 337
- 18.22** Could Bicoid be a morphogen that determines the anterior end of a fruit fly? 385
- 19.2** What causes tobacco mosaic disease? 397
- 20.16** Can the nucleus from a differentiated animal cell direct development of an organism? 427
- 20.21** Can a fully differentiated human cell be “deprogrammed” to become a stem cell? 430
- 21.18** What is the function of a gene (*FOXP2*) that is rapidly evolving in the human lineage? 459
- 22.13** Can a change in a population’s food source result in evolution by natural selection? 475
- *23.16** Do females select mates based on traits indicative of “good genes”? 498
- 24.7** Can divergence of allopatric populations lead to reproductive isolation? 510
- 24.12** Does sexual selection in cichlids result in reproductive isolation? 513
- 24.18** How does hybridization lead to speciation in sunflowers? 519
- 25.26** What causes the loss of spines in lake stickleback fish? 544
- 26.6** What is the species identity of food being sold as whale meat? 555
- 27.10** Can prokaryotes evolve rapidly in response to environmental change? 576
- 28.24** What is the root of the eukaryotic tree? 609
- 29.9** Can bryophytes reduce the rate at which key nutrients are lost from soils? 625
- 31.20** Do fungal endophytes benefit a woody plant? 665
- 33.30** Did the arthropod body plan result from new *Hox* genes? 705
- 34.51** Did gene flow occur between Neanderthals and humans? 751
- 36.18** Does phloem sap contain more sugar near sources than near sinks? 799
- 37.11** How variable are the compositions of bacterial communities inside and outside of roots? 812
- 39.5** What part of a grass coleoptile senses light, and how is the signal transmitted? 845
- 39.6** What causes polar movement of auxin from shoot tip to base? 846
- 39.16** How does the order of red and far-red illumination affect seed germination? 855
- 40.17** How does a Burmese python generate heat while incubating eggs? 886
- 40.22** What happens to the circadian clock during hibernation? 891
- *41.4** Can diet influence the frequency of birth defects? 900
- 42.25** What causes respiratory distress syndrome? 942
- 44.20** Can aquaporin mutations cause diabetes? 993
- 46.8** Why is sperm usage biased when female fruit flies mate twice? 1022
- †47.4** Does the distribution of Ca^{2+} in an egg correlate with formation of the fertilization envelope? 1044
- 47.23** How does distribution of the gray crescent affect the developmental potential of the first two daughter cells? 1059
- 47.24** Can the dorsal lip of the blastopore induce cells in another part of the amphibian embryo to change their developmental fate? 1060
- 47.26** What role does the zone of polarizing activity (ZPA) play in limb pattern formation in vertebrates? 1061
- 50.23** How do mammals detect different tastes? 1121
- 51.8** Does a digger wasp use landmarks to find her nest? 1143
- 51.24** Are differences in migratory orientation within a species genetically determined? 1155
- 53.14** How does caring for offspring affect parental survival in kestrels? 1199
- †54.3** Can a species’ niche be influenced by interspecific competition? 1214
- 54.18** Is *Pisaster ochraceus* a keystone species? 1224
- 55.6** Which nutrient limits phytoplankton production along the coast of Long Island? 1241
- 55.12** How does temperature affect litter decomposition in an ecosystem? 1246
- *56.13** What caused the drastic decline of the Illinois greater prairie chicken population? 1265

Research Method Figures

- 5.21** X-Ray Crystallography 83
- 6.4** Cell Fractionation 96
- 10.9** Determining an Absorption Spectrum 193
- 13.3** Preparing a Karyotype 256
- 14.2** Crossing Pea Plants 270
- 14.7** The Testcross 275
- 15.11** Constructing a Linkage Map 305
- 20.3** Sequencing by Synthesis: Next-Generation Sequencing 415
- 20.7** The Polymerase Chain Reaction (PCR) 419
- 20.11** RT-PCR Analysis of the Expression of Single Genes 423
- 26.15** Applying Parsimony to a Problem in Molecular Systematics 561
- 35.21** Using Dendrochronology to Study Climate 771
- 37.7** Hydroponic Culture 808
- 48.8** Intracellular Recording 1070
- 53.2** Determining Population Size Using the Mark-Recapture Method 1189
- 54.12** Determining Microbial Diversity Using Molecular Tools 1221

*The Inquiry Figure, original research paper, and a worksheet to guide you through the paper are provided in *Inquiry in Action: Interpreting Scientific Papers*, Fourth Edition.

†A related Experimental Inquiry Tutorial can be assigned in MasteringBiology.®

Interviews

UNIT 1 THE CHEMISTRY OF LIFE 27



Lovell Jones

Prairie View A&M University and
University of Texas MD Anderson
Cancer Center

UNIT 2 THE CELL 92



Elba Serrano

New Mexico State University

UNIT 3 GENETICS 253



Shirley Tilghman

Princeton University

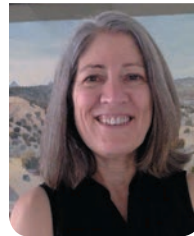
UNIT 4 MECHANISMS OF EVOLUTION 465



Jack Szostak

Harvard University

UNIT 5 THE EVOLUTIONARY HISTORY OF BIOLOGICAL DIVERSITY 550



Nancy Moran

University of Texas at Austin

UNIT 6 PLANT FORM AND FUNCTION 755



Philip Benfey

Duke University

UNIT 7 ANIMAL FORM AND FUNCTION 870



Harald zur Hausen

German Cancer Research Center

UNIT 8 ECOLOGY 1161



Tracy Langkilde

Penn State University

Acknowledgments

The authors wish to express their gratitude to the global community of instructors, researchers, students, and publishing professionals who have contributed to the Eleventh Edition of *CAMPBELL BIOLOGY*.

As authors of this text, we are mindful of the daunting challenge of keeping up to date in all areas of our rapidly expanding subject. We are grateful to the many scientists who helped shape this text by discussing their research fields with us, answering specific questions in their areas of expertise, and sharing their ideas about biology education. We are especially grateful to the following, listed alphabetically: Graham Alexander, John Archibald, Kristian Axelsen, Barbara Bowman, Joanne Chory, Roger Craig, Michael Hothorn, Patrick Keeling, Barrett Klein, Rachel Kramer Green, James Nieh, Kevin Peterson, T.K. Reddy, Andrew Roger, Alastair Simpson, Marty Taylor, and Elisabeth Wade. In addition, the biologists listed on pages xxviii–xxxii provided detailed reviews, helping us ensure the text’s scientific accuracy and improve its pedagogical effectiveness. We thank Michael Pollock, author of the Study Guide, for his many contributions to the accuracy, clarity, and consistency of the text; and we thank Carolyn Wetzel, Ruth Buskirk, Joan Sharp, Jennifer Yeh, and Charlene D’Avanzo for their contributions to the Scientific Exercises and Problem-Solving Exercises.

Thanks also to the other professors and students, from all over the world, who contacted the authors directly with useful suggestions. We alone bear the responsibility for any errors that remain, but the dedication of our consultants, reviewers, and other correspondents makes us confident in the accuracy and effectiveness of this text.

Interviews with prominent scientists have been a hallmark of *CAMPBELL BIOLOGY* since its inception, and conducting these interviews was again one of the great pleasures of revising the book. To open the eight units of this edition, we are proud to include interviews with Lovell Jones, Elba Serrano, Shirley Tilghman, Jack Szostak, Nancy Moran, Philip Benfey, Harald zur Hausen, and Tracy Langkilde.

We are especially grateful to Rebecca Orr for her hard work on the digital resources for the eText, Study Area, and Ready-to-Go Teaching Modules. And thanks to the rest of the Ready-to-Go Teaching Modules team: Molly Jacobs, Karen Resendes, Eileen Gregory, Angela Hodgson, Maureen Leupold, Jennifer Metzler, Allison Silveus, Jered Studinski, Sara Tallarovic, Judy Schoonmaker, Michael Pollock, and Chad Brassil. We would also like to extend our sincere appreciation to Carolyn Wetzel, Jennifer Yeh, Matt Lee, and Sherry Seston for their hard work on the Figure Walkthroughs. And our gratitude goes to Katie Cook for keeping these projects so well organized. Thanks also to Kaddee Lawrence for writing the questions that accompany the Visualizing Figures in MasteringBiology and to Mikaela Schmitt-Harsh for converting the Problem-Solving Exercises to MasteringBiology tutorials.

The value of *CAMPBELL BIOLOGY* as a learning tool is greatly enhanced by the supplementary materials that have been created for instructors and students. We recognize that the dedicated authors of these materials are essentially writing mini (and not so mini) books. We appreciate the hard work and creativity of all the authors listed, with their creations, on page xxii. We are also grateful to Kathleen Fitzpatrick and Nicole Tunbridge (PowerPoint® Lecture Presentations); Roberta Batorsky, Douglas Darnowski, James Langeland, and David Knochel (Clicker Questions); Sonish Azam, Kevin Friesen, Murty Kambhampati, Janet Lanza, Ford Lux, Chris Romero, Ruth Sporer, and David Knochel (Test Bank); Natalie Bronstein, Linda Logdberg, Matt McArdle, Ria Murphy, Chris Romero, and Andy Stull (Dynamic Study Modules); and Eileen Gregory, Rebecca Orr, and Elena Pravosudova (Adaptive Follow-up Assignments).

MasteringBiology™ and the other electronic accompaniments for this text are invaluable teaching and learning aids. We thank the hardworking, industrious instructors who worked on the

revised and new media: Roberta Batorsky, Beverly Brown, Erica Cline, Willy Cushwa, Tom Kennedy, Tom Owens, Michael Pollock, Frieda Reichsman, Rick Spinney, Dennis Venema, Carolyn Wetzel, Heather Wilson-Ashworth, and Jennifer Yeh. We are also grateful to the many other people—biology instructors, editors, and production experts—who are listed in the credits for these and other elements of the electronic media that accompany the text.

CAMPBELL BIOLOGY results from an unusually strong synergy between a team of scientists and a team of publishing professionals.

Our editorial team at Pearson Education again demonstrated unmatched talents, commitment, and pedagogical insights. Our Courseware Portfolio Management Specialist, Josh Frost, brought publishing savvy, intelligence, and a much-appreciated level head to leading the whole team. The clarity and effectiveness of every page owe much to our extraordinary Supervising Editors Beth Winickoff and Pat Burner, who worked with a top-notch team of Courseware Senior Analysts in John Burner, Mary Ann Murray, Mary Hill, Laura Southworth, and Hilair Chism. Our unsurpassed Courseware Director of Content Development Ginnie Simone Jutson and Courseware Portfolio Management Director Beth Wilbur were indispensable in moving the project in the right direction. We also want to thank Robin Heyden for organizing the annual Biology Leadership Conferences and keeping us in touch with the world of AP Biology.

You would not have this beautiful text if not for the work of the production team: Director of Product Management Services Erin Gregg; Managing Producer Michael Early; Content Producer Lori Newman; Photo Researcher Maureen Spuhler; Copy Editor Joanna Dinsmore; Proofreader Pete Shanks; Rights & Permissions Manager Ben Ferrini; Managing Editor Angel Chavez and the rest of the staff at Integra Software Services, Inc.; Art Production Manager Rebecca Marshall, Artist Kitty Auble, and the rest of the staff at Lachina; Design Manager Marilyn Perry; Text and Cover Designer Elise Lansdon; and Manufacturing Buyer Stacey Weinberger. We also thank those who worked on the text’s supplements: Josey Gist, Margaret Young, Kris Langan, Pete Shanks, Crystal Clifton and Jennifer Hastings at Progressive Publishing Alternatives, and Margaret McConnell at Integra. And for creating the wonderful package of electronic media that accompanies the text, we are grateful to Tania Mlawer, Sarah Jensen, Charles Hall, Katie Foley, Laura Tommasi, Lee Ann Doctor, Tod Regan, Libby Reiser, Jackie Jakob, Sarah Young-Dualan, Cady Owens, Caroline Ayres, Katie Cook, and Ziki Dekel as well as VP of Production and Digital Studio Lauren Fogel and Director of Digital Content Development Portfolio Management Stacy Treco.

For their important roles in marketing the text and media, we thank Christy Lesko, Lauren Harp, Kelly Galli, and Jane Campbell. For her market development support, we thank Jessica Moro. We are grateful to Adam Jaworski, VP Portfolio Management, Science, and Paul Corey, Managing Director, Higher Education Courseware, for their enthusiasm, encouragement, and support.

The Pearson sales team, which represents *CAMPBELL BIOLOGY* on campus, is an essential link to the users of the text. They tell us what you like and don’t like about the text, communicate the features of the text, and provide prompt service. We thank them for their hard work and professionalism. For representing our text to our international audience, we thank our sales and marketing partners throughout the world. They are all strong allies in biology education.

Finally, we wish to thank our families and friends for their encouragement and patience throughout this long project. Our special thanks to Ross, Lily, and Alex (L.A.U.); Debra and Hannah (M.L.C.); Aaron, Sophie, Noah, and Gabriele (S.A.W.); Natalie (P.V.M.); and Paul, Dan, Maria, Armelle, and Sean (J.B.R.). And, as always, thanks to Rochelle, Allison, Jason, McKay, and Gus.

Lisa A. Urry, Michael L. Cain, Steven A. Wasserman, Peter V. Minorsky, and Jane B. Reece

Reviewers

Eleventh Edition Reviewers

Steve Abedon, *Ohio State University*
John Alcock, *Arizona State University*
Philip Allman, *Florida Gulf Coast College*
Rodney Allrich, *Purdue University*
Jim Barron, *Montana State University Billings*
Stephen Bauer, *Belmont Abbey College*
Aimee Bernard, *University of Colorado Denver*
Teresa Bilinski, *St. Edward's University*
Sarah Bissonnette, *University of California, Berkeley*
Jeffery Bowen, *Bridgewater State University*
Scott Bowling, *Auburn University*
David Broussard, *Lycoming College*
Tessa Burch, *University of Tennessee*
Warren Burggren, *University of North Texas*
Patrick Cafferty, *Emory University*
Michael Campbell, *Penn State University*
Jeffrey Carmichael, *University of North Dakota*
P. Bryant Chase, *Florida State University*
Steve Christenson, *Brigham Young University*
Curt Coffman, *Vincennes University*
Bill Cohen, *University of Kentucky*
Sean Coleman, *University of the Ozarks*
Erin Connolly, *University of South Carolina*
Ron Cooper, *University of California, Los Angeles*
Curtis Daehler, *University of Hawaii at Manoa*
Deborah Dardis, *Southeastern Louisiana University*
Douglas Darnowski, *Indiana University Southeast*
Jeremiah Davie, *D'Youville College*
Melissa Deadmond, *Truckee Meadows Community College*
Jennifer Derkits, *J. Sergeant Reynolds Community College*
Jean DeSaix, *University of Northern Carolina*
Kevin Dixon, *Florida State University*
David Dunbar, *Cabrini College*
Anna Edlund, *Lafayette College*
Rob Erdman, *Florida Gulf Coast College*
Dale Erskine, *Lebanon Valley College*
Susan Erster, *Stony Brook University*
Linda Fergusson-Kolmes, *Portland Community College, Sylvania Campus*
Danilo Fernando, *SUNY College of Environmental Science and Forestry, Syracuse*
Christina Fieber, *Horry-Georgetown Technical College*
Melissa Fierke, *SUNY College of Environmental Science and Forestry*
Mark Flood, *Fairmont State University*
Robert Fowler, *San Jose State University*
Stewart Frankel, *University of Hartford*
Eileen Gregory, *Rollins College*
Gokhan Hacisalihoglu, *Florida A&M University*
Monica Hall-Woods, *St. Charles Community College*
Jean Hardwick, *Ithaca College*
Deborah Harris, *Case Western Reserve University*
Chris Haynes, *Shelton State Community College*
Albert Herrera, *University of Southern California*
Karen Hicks, *Kenyon College*
Elizabeth Hobson, *New Mexico State University*
Mark Holbrook, *University of Iowa*
Erin Irish, *University of Iowa*
Sally Irwin, *University of Hawaii, Maui College*
Jamie Jensen, *Brigham Young University*
Jerry Johnson, *Corban University*
Ann Jorgensen, *University of Hawaii*
Ari Jumpponen, *Kansas State University*
Doug Kane, *Defiance College*
Kasey Karen, *Georgia College & State University*
Paul Kenrick, *Natural History Museum, London*
Stephen T. Kilpatrick, *University of Pittsburgh at Johnstown*
Shannon King, *North Dakota State University*
Karen M. Klein, *Northampton Community College*
Jacob Krans, *Western New England University*
Dubear Kroening, *University of Wisconsin*
Barbara Kuemerle, *Case Western Reserve University*
Jim Langeland, *Kalamazoo College*
Grace Lasker, *Lake Washington Institute of Technology*
Jani Lewis, *State University of New York at Geneseo*
Eric W. Linton, *Central Michigan University*
Tatyana Lobova, *Old Dominion University*
David Longstreth, *Louisiana State University*
Donald Lovett, *College of New Jersey*
Lisa Lyons, *Florida State University*
Mary Martin, *Northern Michigan University*

Scott Meissner, *Cornell University*
Jenny Metzler, *Ball State University*
Grace Miller, *Indiana Wesleyan University*
Jonathan Miller, *Edmonds Community College*
Mill Miller, *Wright State University*
Barbara Nash, *Mercy College*
Karen Neal, *J. Sargeant Reynolds Community College, Richmond*
Shawn Nordell, *Saint Louis University*
Olabisi Ojo, *Southern University at New Orleans*
Fatimata Pale, *Thiel College*
Susan Parrish, *McDaniel College*
Eric Peters, *Chicago State University*
Jarmila Pittermann, *University of California, Santa Cruz*
Jason Porter, *University of the Sciences in Philadelphia*
Elena Pravosudova, *University of Nevada, Reno*
Steven Price, *Virginia Commonwealth University*
Samiksha Raut, *University of Alabama at Birmingham*
Robert Reavis, *Glendale Community College*
Wayne Rickoll, *University of Puget Sound*
Luis Rodriguez, *San Antonio College*
Kara Rosch, *Blinn College*
Scott Russell, *University of Oklahoma*
Jodi Rymer, *College of the Holy Cross*
Per Salvesen, *University of Bergen*
Davison Sangweme, *University of North Georgia*
Karin Scarpinato, *Georgia Southern University*
Cara Schillington, *Eastern Michigan University*
David Schwartz, *Houston Community College*
Carrie Schwarz, *Western Washington University*
Joan Sharp, *Simon Fraser University*
Alison Sherwood, *University of Hawaii at Manoa*
Eric Shows, *Jones County Junior College*
Brian Shmaefsky, *Lone Star College*
John Skillman, *California State University, San Bernardino*
Rebecca Sperry, *Salt Lake Community College*
Clint Springer, *Saint Joseph's University*
Mark Sturtevant, *Oakland University*
Diane Sweeney, *Punahou School*
Kristen Taylor, *Salt Lake Community College*
Rebecca Thomas, *College of St. Joseph*
Martin Vaughan, *Indiana University-Purdue University Indianapolis*
Meena Vijayaraghavan, *Tulane University*
James T. Warren Jr., *Pennsylvania State University*
Jim Wee, *Loyola University, New Orleans*
Charles Wellman, *Sheffield University*
Christopher Whipps, *State University of New York College of Environmental Science and Forestry*
Philip White, *James Hutton Institute*
Jessica White-Phillip, *Our Lady of the Lake University*
Robert Yost, *Indiana University-Purdue University Indianapolis*
Tia Young, *Pennsylvania State University*

Reviewers of Previous Editions

Kenneth Able, *State University of New York, Albany*; Thomas Adams, *Michigan State University*; Martin Adamson, *University of British Columbia*; Dominique Adriaens, *Ghent University*; Ann Aguanno, *Marymount Manhattan College*; Shylaja Akkaraju, *Bronx Community College of CUNY*; Marc Albrecht, *University of Nebraska*; John Alcock, *Arizona State University*; Eric Alcorn, *Acadia University*; George R. Aliaga, *Tarrant County College*; Rodney Allrich, *Purdue University*; Richard Almon, *State University of New York, Buffalo*; Bonnie Amos, *Angelo State University*; Katherine Anderson, *University of California, Berkeley*; Richard J. Andren, *Montgomery County Community College*; Estry Ang, *University of Pittsburgh, Greensburg*; Jeff Appling, *Clemson University*; J. David Archibald, *San Diego State University*; David Armstrong, *University of Colorado, Boulder*; Howard J. Arnott, *University of Texas, Arlington*; Mary Ashley, *University of Illinois, Chicago*; Angela S. Aspbury, *Texas State University*; Robert Atherton, *University of Wyoming*; Karl Aufderheide, *Texas A&M University*; Leigh Auleb, *San Francisco State University*; Terry Austin, *Temple College*; P. Stephen Baenziger, *University of Nebraska*; Brian Bagatto, *University of Akron*; Ellen Baker, *Santa Monica College*; Katherine Baker, *Millersville University*; Virginia Baker, *Chipola College*; Teri Balsler, *University of Wisconsin, Madison*; William Barklow, *Framingham State College*; Susan Barman, *Michigan State University*; Steven Barnhart, *Santa Rosa Junior College*; Andrew Barton, *University of Maine Farmington*; Rebecca A. Bartow, *Western Kentucky University*; Ron Basmajian, *Merced College*; David Bass, *University of Central Oklahoma*; Bonnie Baxter, *Westminster College*; Tim Beagley, *Salt Lake Community College*; Margaret E. Beard, *College of the Holy Cross*; Tom Beatty, *University of British Columbia*; Chris Beck, *Emory University*; Wayne Becker, *University of Wisconsin, Madison*; Patricia Bedinger, *Colorado State University*; Jane Beiswenger, *University of Wyoming*; Anne Bekoff, *University of Colorado, Boulder*; Marc Bekoff, *University of Colorado, Boulder*; Tania Beliz, *College of*